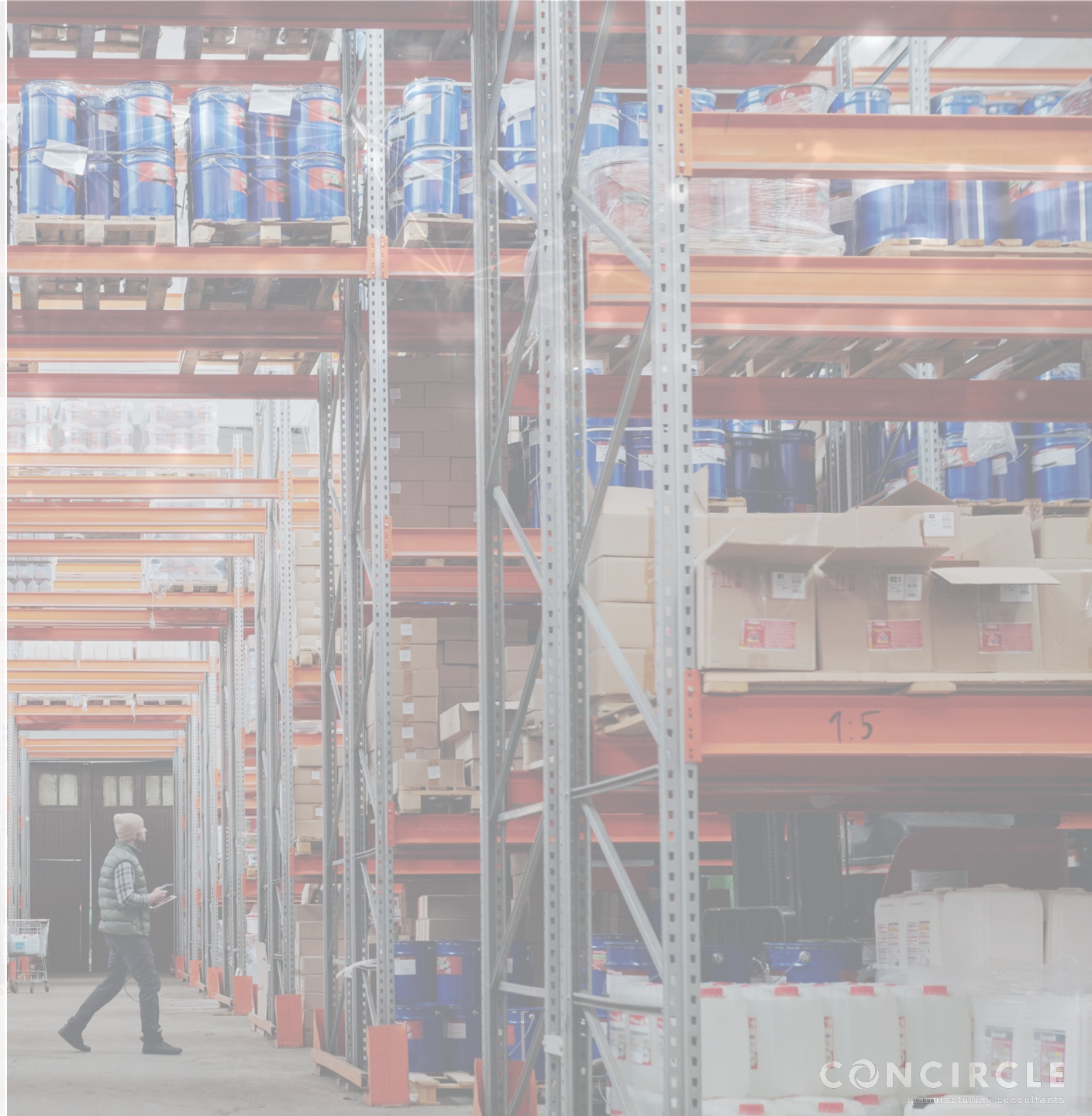


WEBINAR

INTEGRATIVE PRODUCTION AND LOGISTICS IN THE CLOUD

HOW DOES THE
INTEGRATION OF SAP
DMC WITH SAP EWM
WORK?



Agenda for today

- concircle introduction '5min
- Efficient logistics in SAP EWM '10min
- Digital Factory with fully Cloud-based MES '10min
- What offers SAP DMC for integrated logistics? '10min
- Demo: Integrated production and logistics '15min
- Q&A '10min

Speakers:



Aigerim Rabi
Marketing Manager
aigerim.rabi@concircle.com



Andras Sallay
Senior IT Consultant
andras.sallay@concircle.com



Clemens Neuwirth
IT Consultant
clemens.neuwirth@concircle.com

An abstract graphic at the top of the slide features a network of white dots connected by thin white lines, set against a dark blue background. The dots and lines are more concentrated in the upper left and right areas, creating a sense of connectivity and flow.

concircle Company Profile

concircle - 12 Years of Constant Growth



Focus: Vertical
IT integration



80 employees in
4 countries AT / DE /
SK / CH



Over 120
industrial clients



Over 350
successfully
implemented projects



Focus markets
DACH, CEE

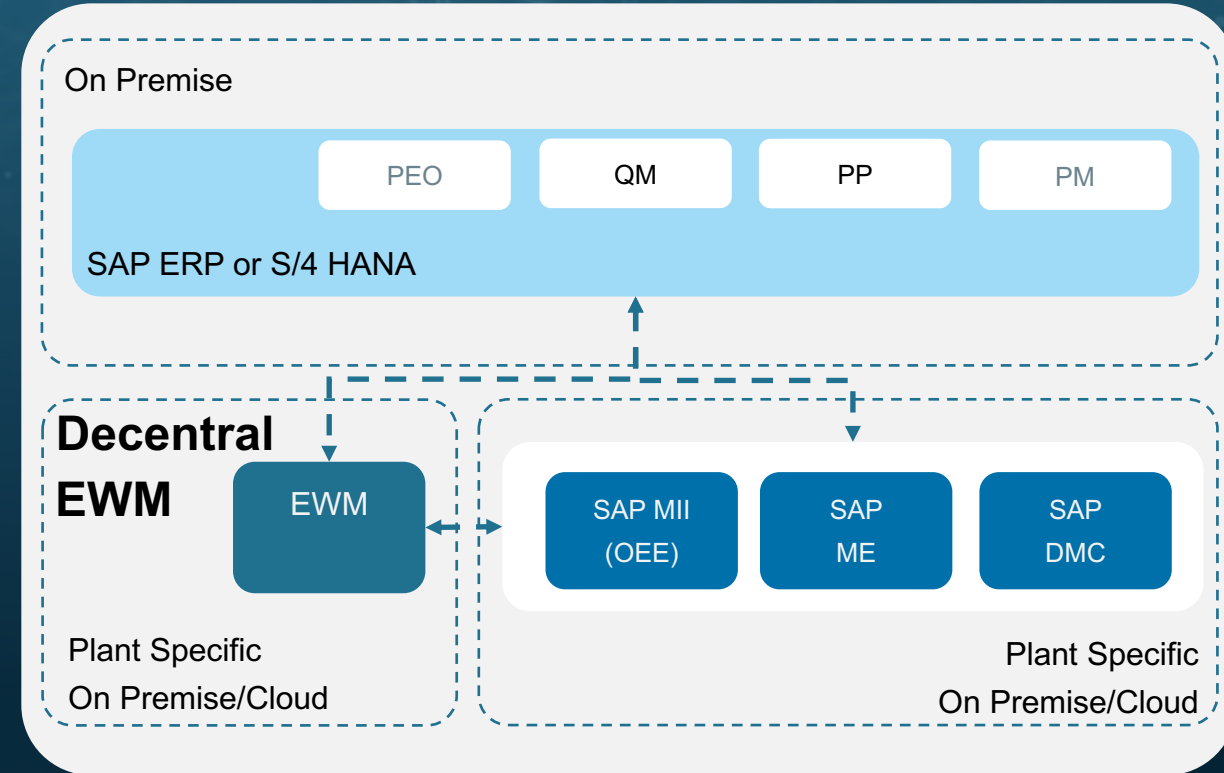
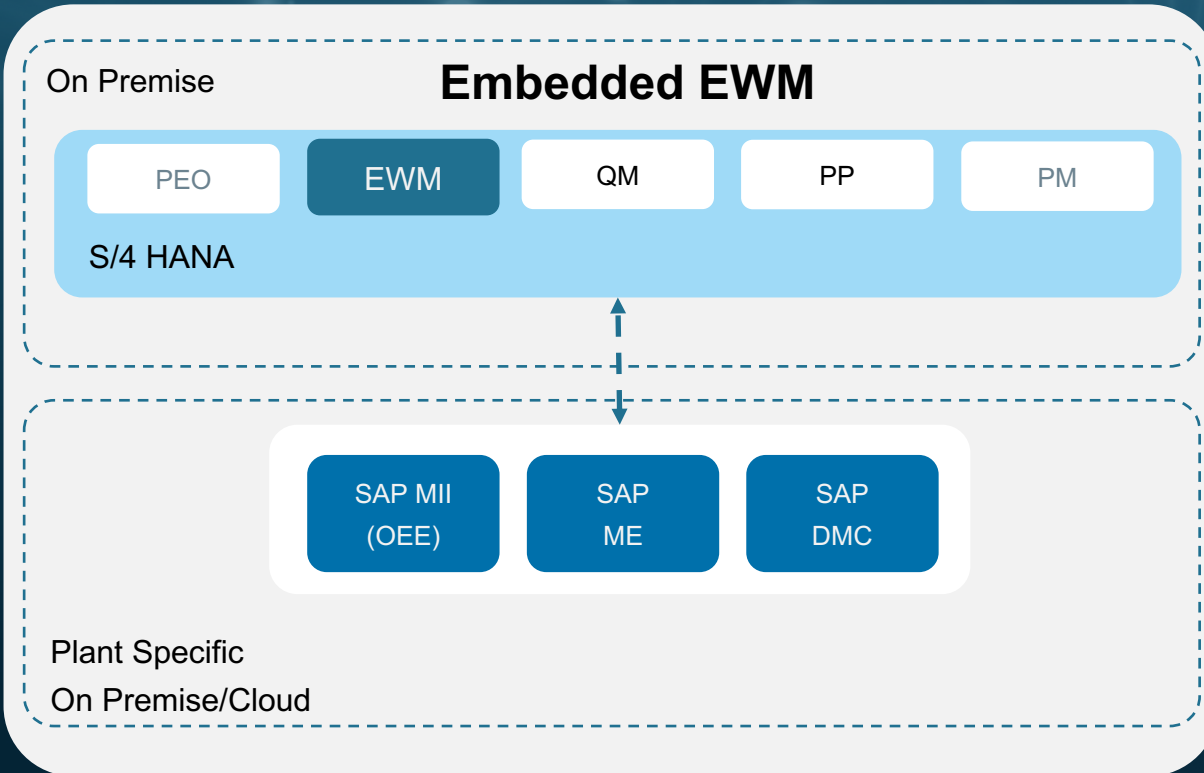


10 million € revenue

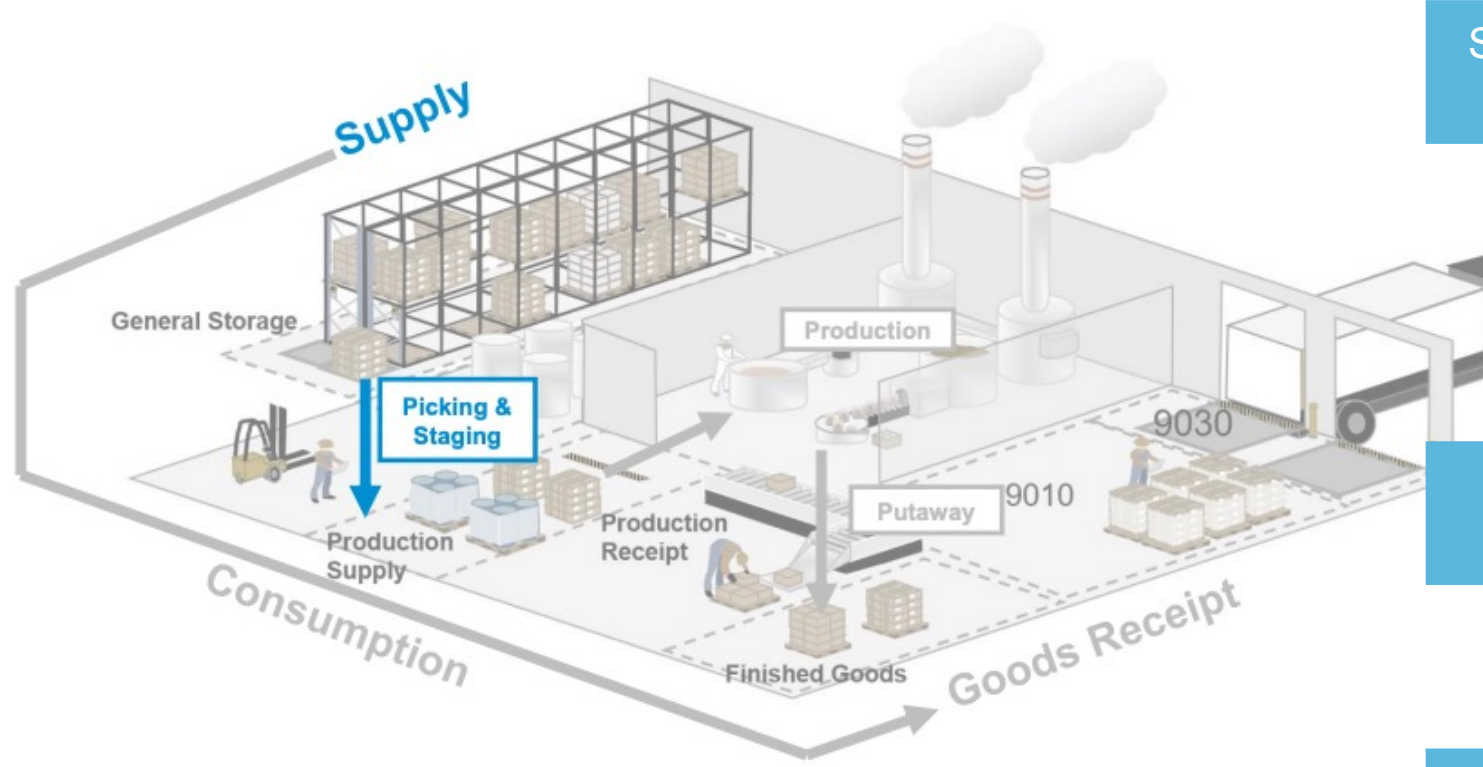
Efficient logistics in SAP EWM

- System landscape
- Production Process Overview
- Staging options
 - ERP
 - EWM
 - MII/ME/DMC
- Outlook

System landscape - embedded and decentral



Production Process Overview – Staging for Production



SAP ERP or
S/4 HANA

- Staging for Production with Deliveries
- Production Supply with Kanban
- Production Supply with JIT Call

SAP
EWM

- Crate Part Supply
- Advanced Production Supply using Production Material Request (PMR)

SAP
ME/MII/DMC

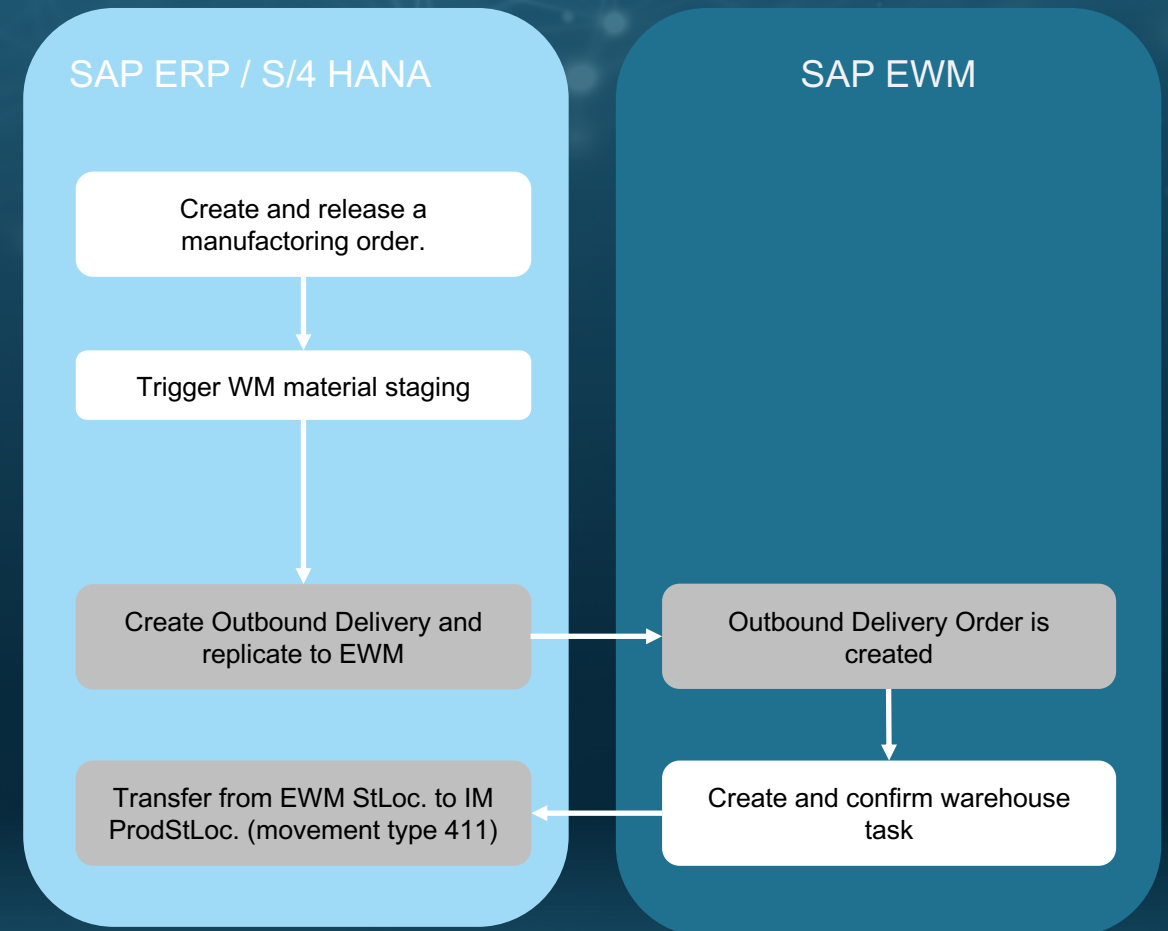
- MES triggered staging
- DMC triggered staging

Staging for Production with Deliveries

Non EWM Storage Location

EWM – Outbound Process:

- Production supply delivery is an outbound delivery.
- Warehouse task is created based on outbound delivery order.
- Destination bin determined from production supply area.

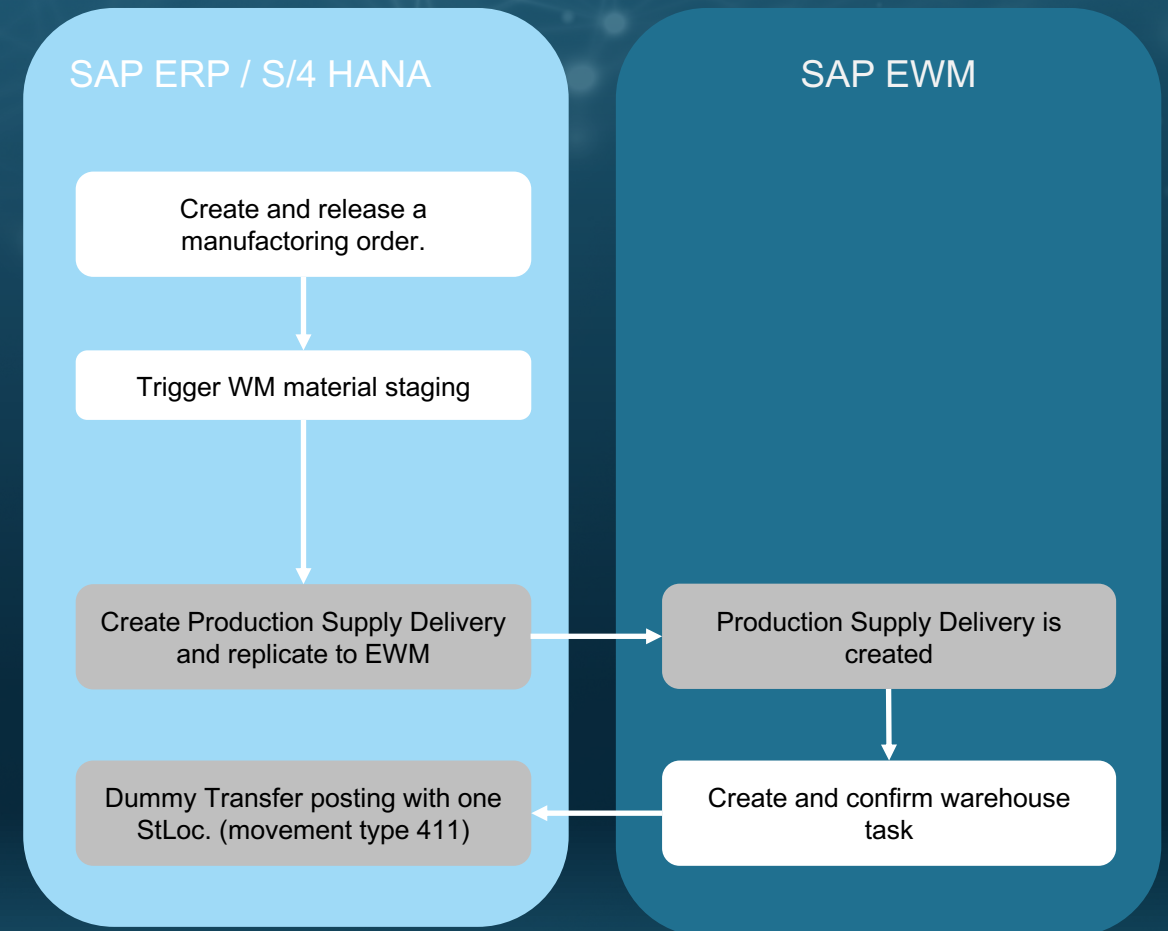


Staging for Production with Deliveries

AFS Storage Location

EWM – Replenishment Process:

- Production supply delivery is a posting change delivery.
- Warehouse task is created based on posting change delivery.
- Destination bin determined from production supply area.
- Ad-hoc staging without staging is possible in EWM but no update on ERP documents.



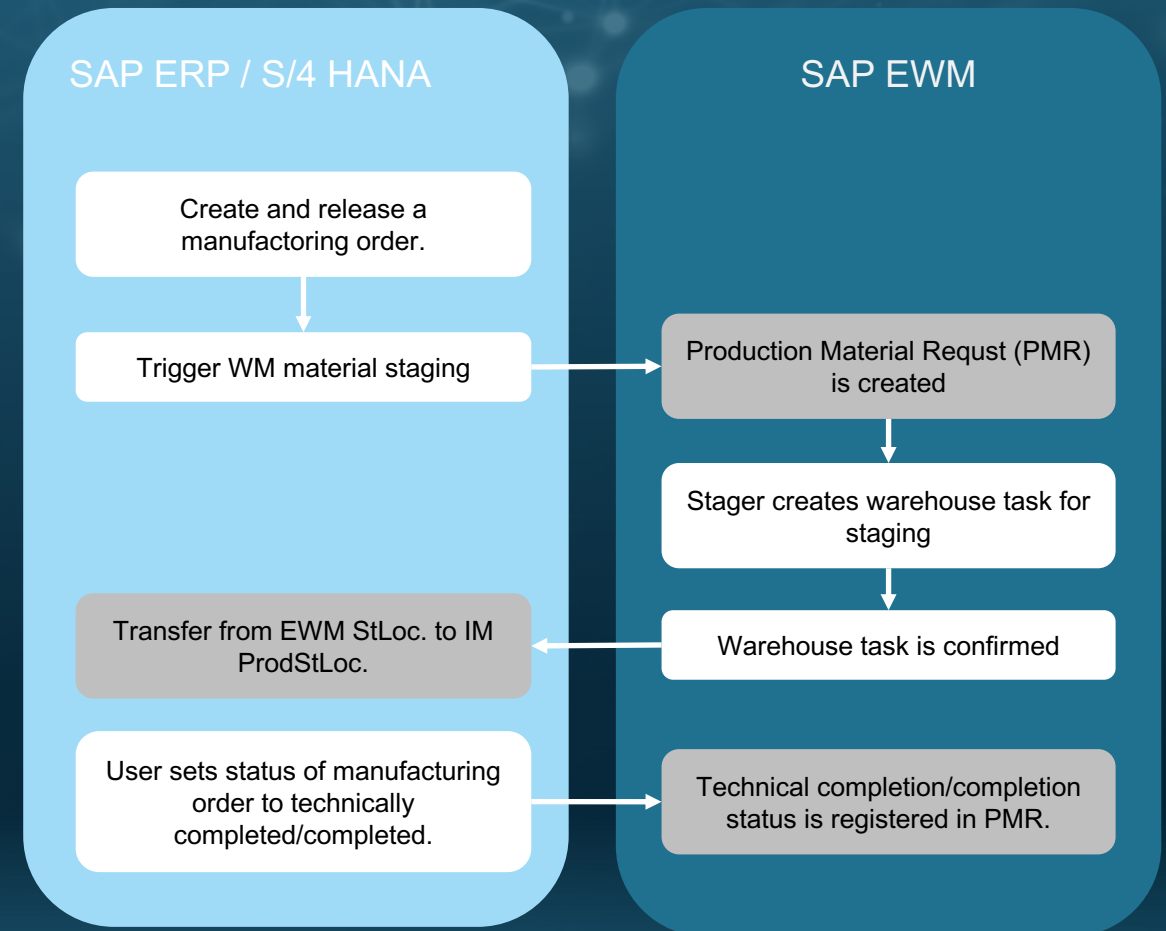
Advanced Production Supply using PMR

Features

- EWM Staging can work in addition to existing “Pick Part” and “Release Order Part”.
- Production Material Request allows more flexible staging in EWM.
- Single Order Staging, Cross Order Staging and Manual Staging are supported.
- Status and quantity updates of manufacturing order are supported.
- User driven staging via desktop transaction or background report.

Benefits

- EWM becomes responsible for staging with more flexibility to optimize production supply.
- Staging for production can continue even if ERP is temporarily not available.



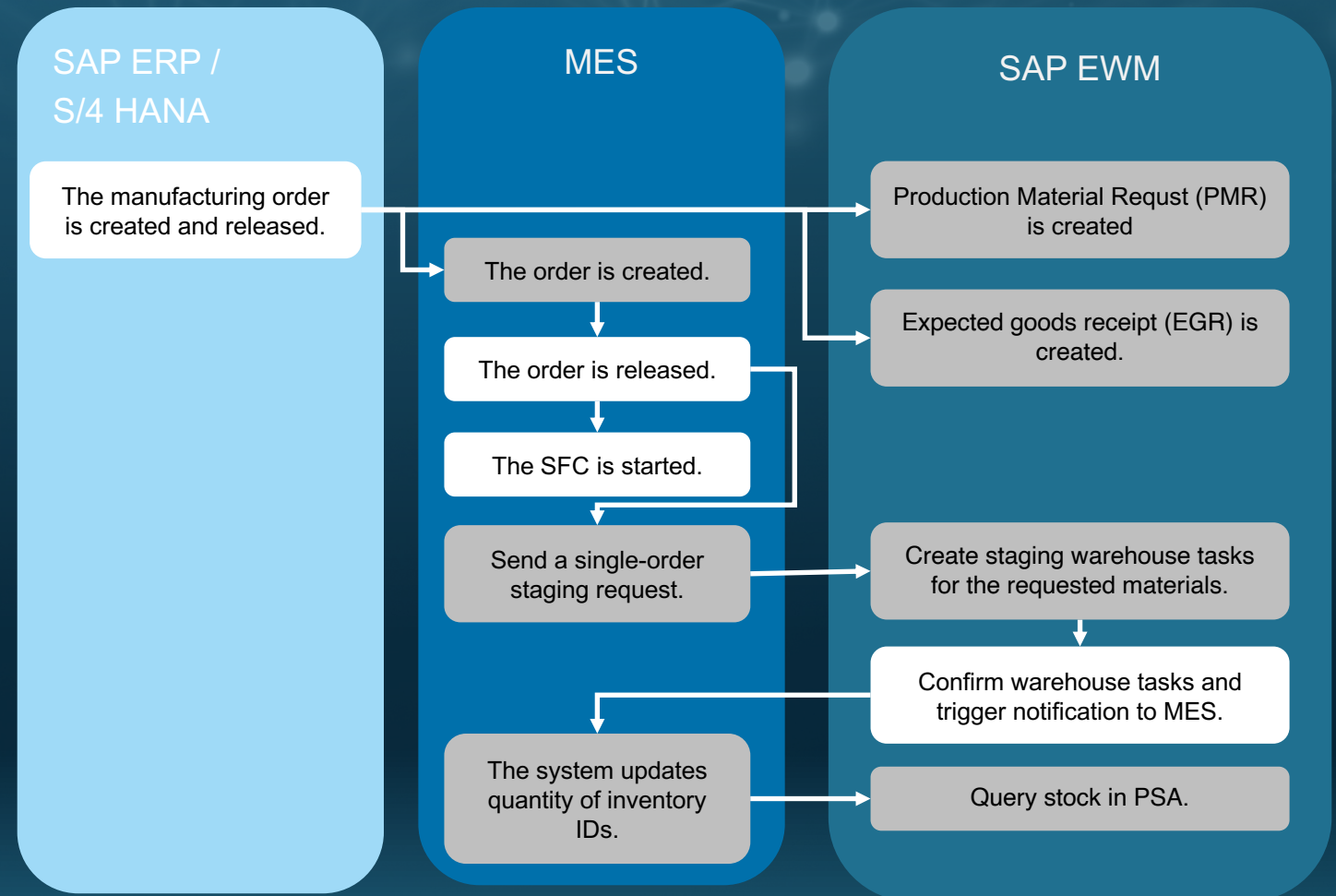
MES Triggered Production Supply

Features

- A request to replenish a stock can be triggered by SAP ME.
- A request for single-order staging is automatically sent when the order is released or the SFC number is started or completed.
- The request contains only EWM-relevant components, either for all or just some specific step.

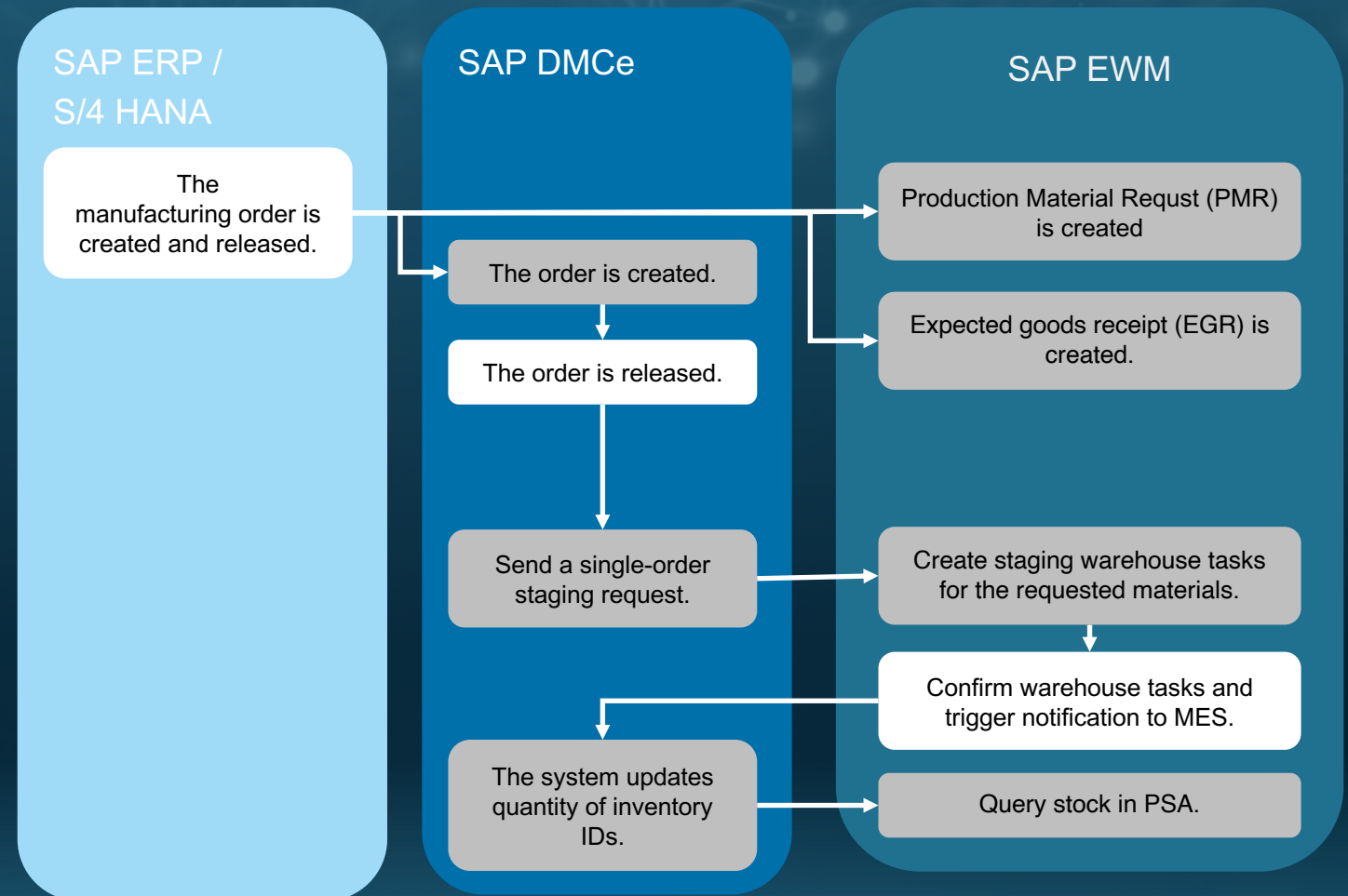
Benefit

- Components staging is triggered when the production system determines a real demand.
- Different trigger actions supply components for some particular steps.
- Pull method for staging serves production processes with limited space in the PSA better than a push method.
- Support request for staging and staging confirmation even if ERP is temporarily not available.



DMC Triggered Production Supply

- Single Order Staging provides sending a request for the components to be staged for a specific order to a warehouse managed with SAP Extended Warehouse Management.
- Single Order Staging Confirmation allows the transfer of stock change notification from SAP EWM to SAP DMCe when the warehouse task of component staging is confirmed.



DMC new features

Request Staging

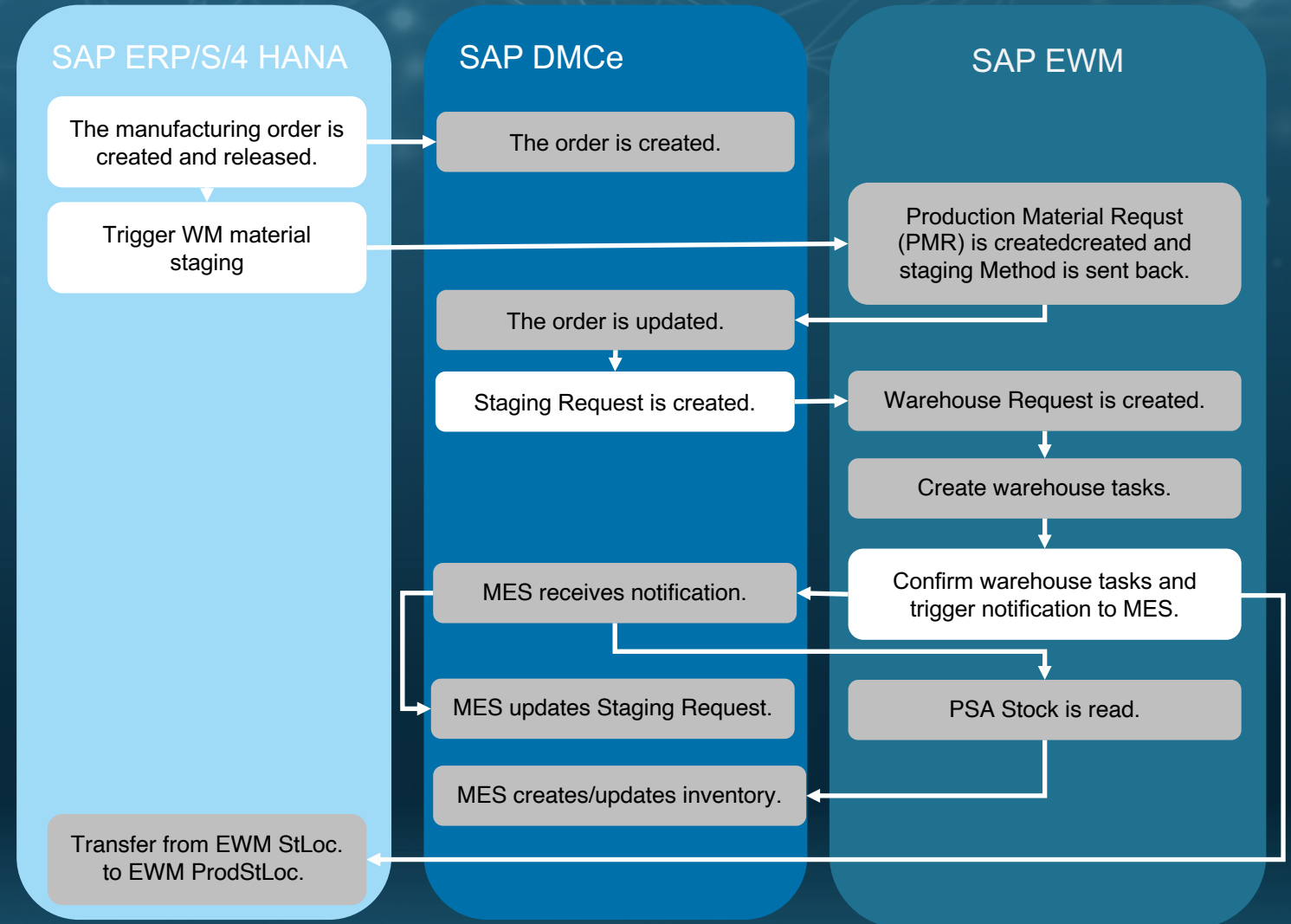
- Staging Request in MES and Warehouse Request in EWM
- New Staging Method: Single Order Staging with Warehouse Request
- Extended Scenarios (WIP, PSA-PSA, etc.)

Track Staging Process

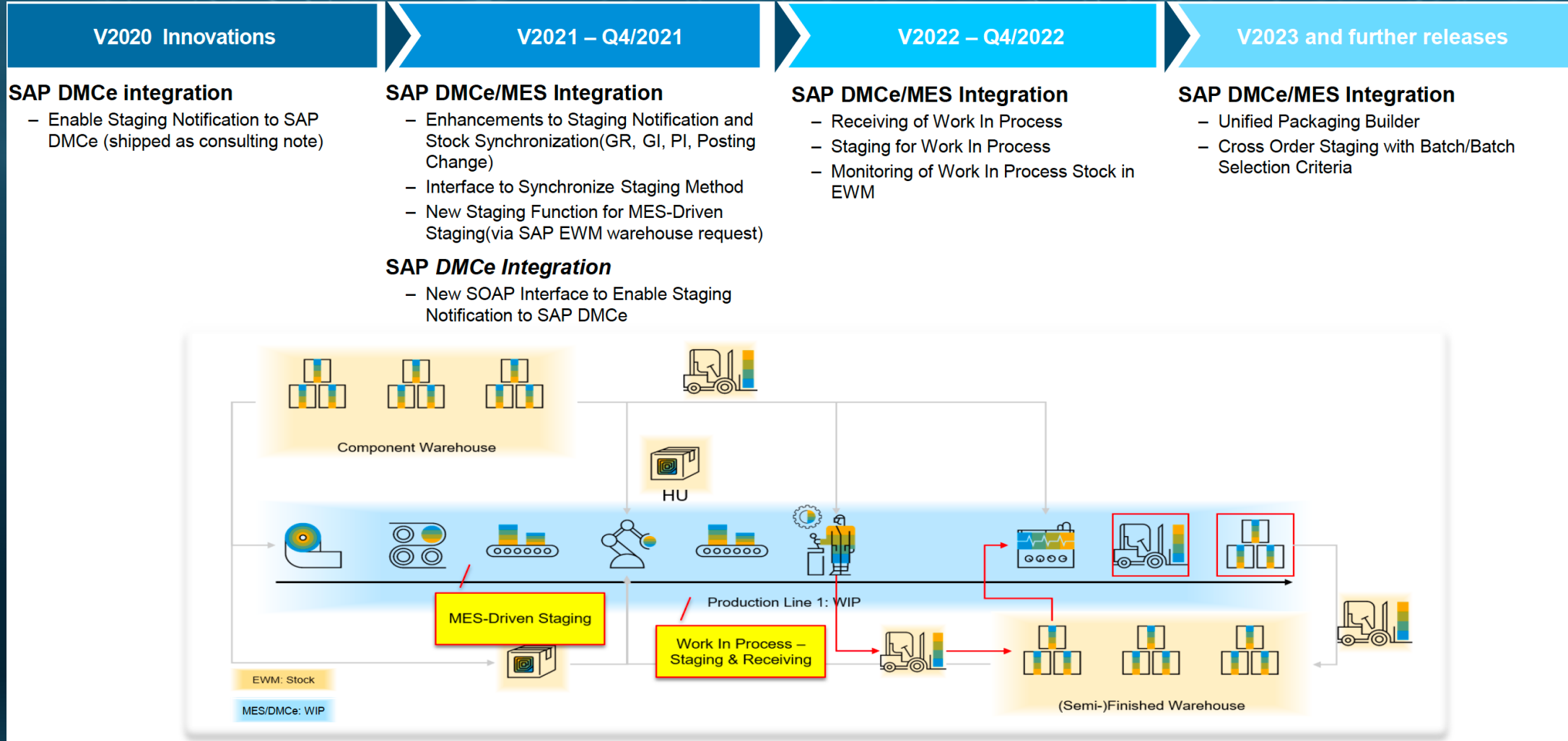
- Staging Status Sync. between EWM and MES
- Quantity update in Staging Request

Manage Staging Tasks

- Check PSA capacity when creating Staging Tasks
- Restrict creating Staging Tasks from PMR
- Optimize and Organize Staging Tasks



Outlook

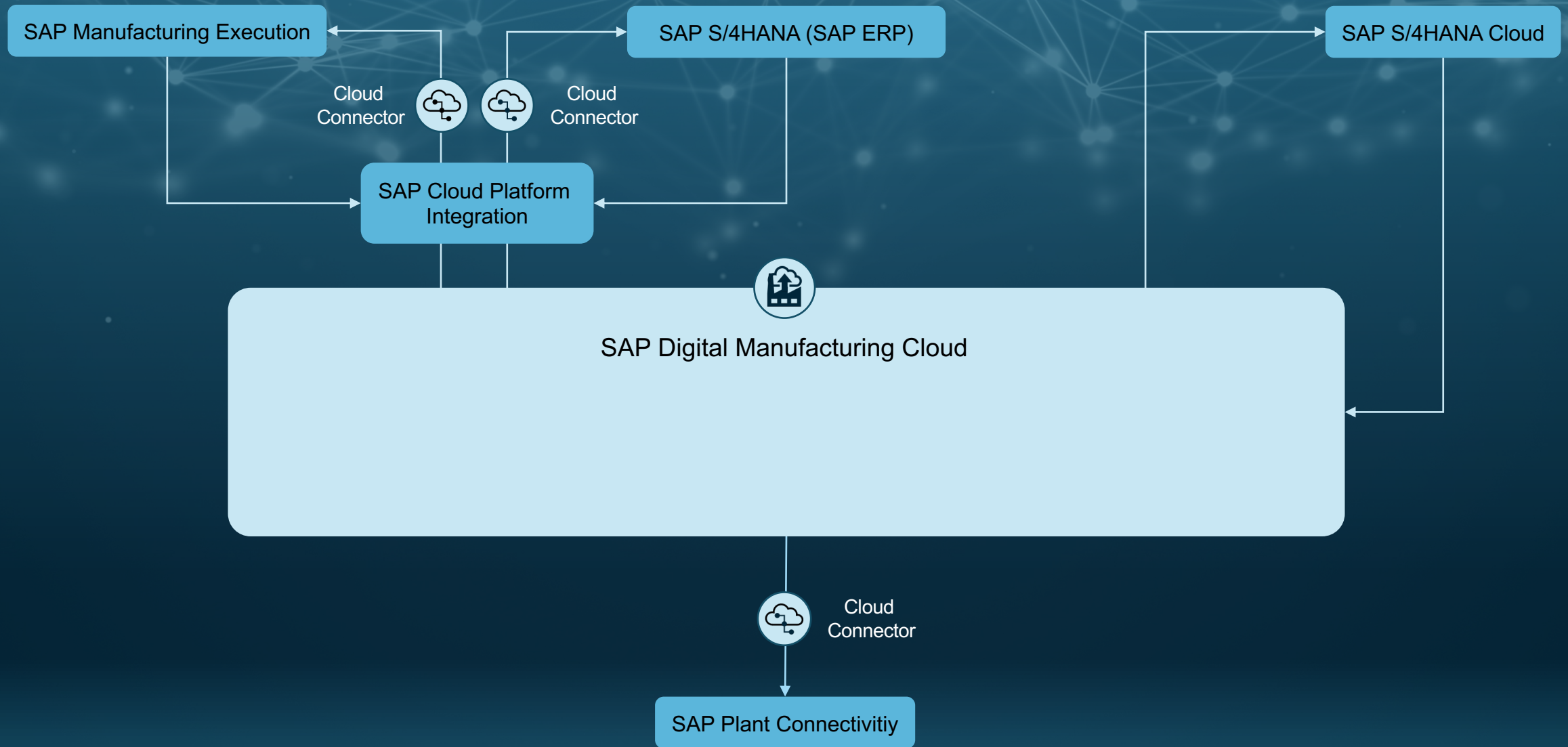


An abstract graphic in the top left corner consisting of a network of white dots connected by thin white lines, set against a dark blue background.

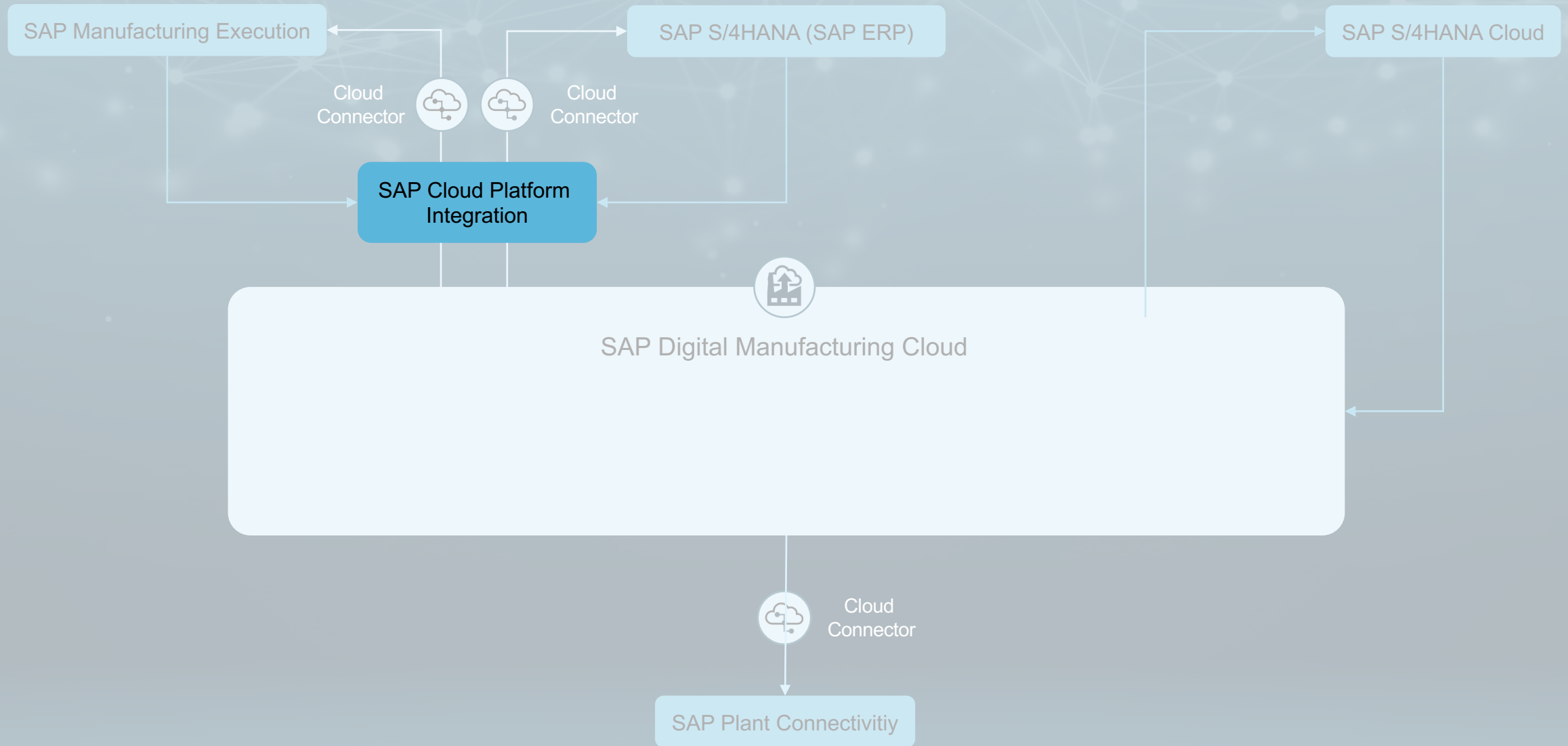
Digital Factory with fully Cloud-based MES

SAP Digital Manufacturing Cloud

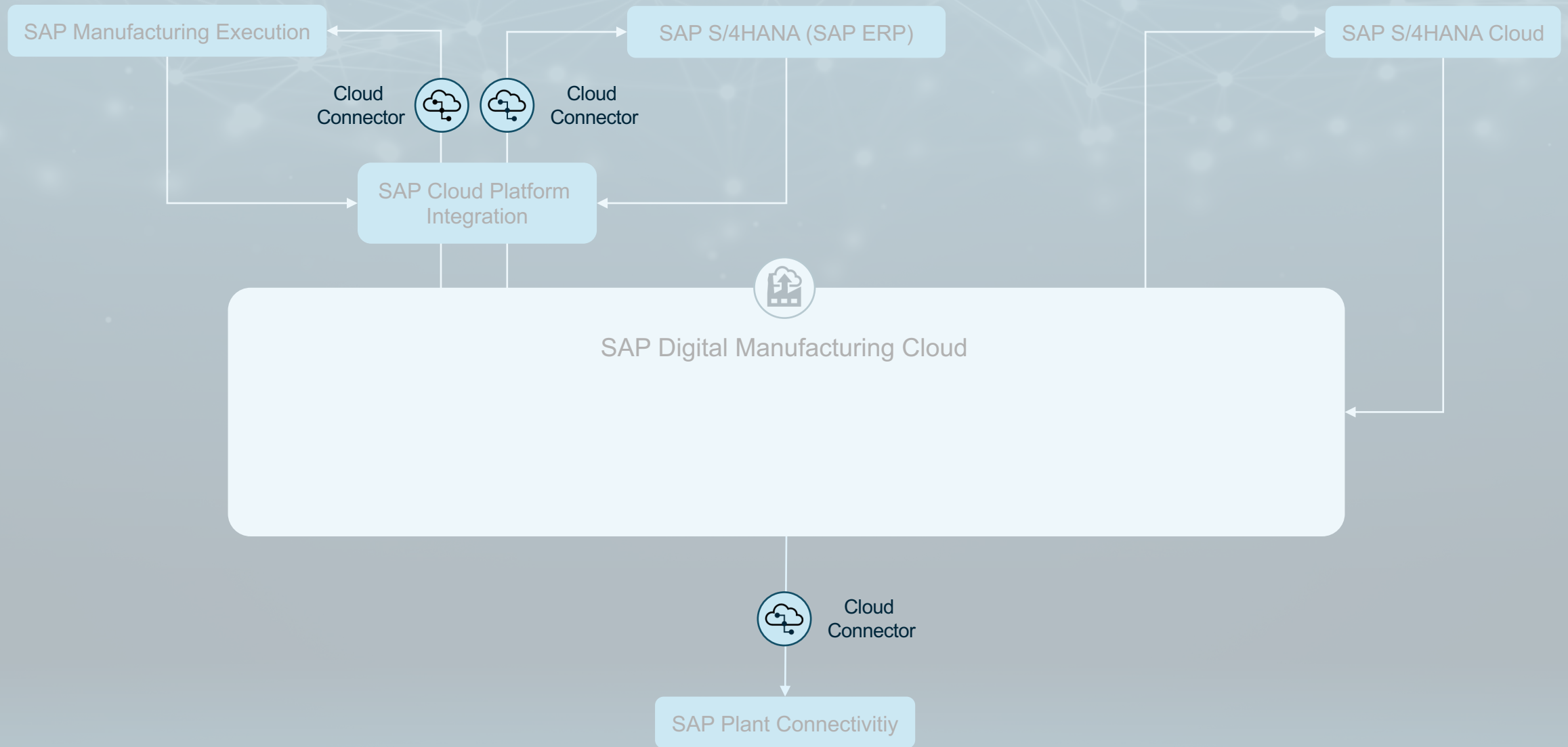
What is DMC?



SAP Cloud Platform Integration

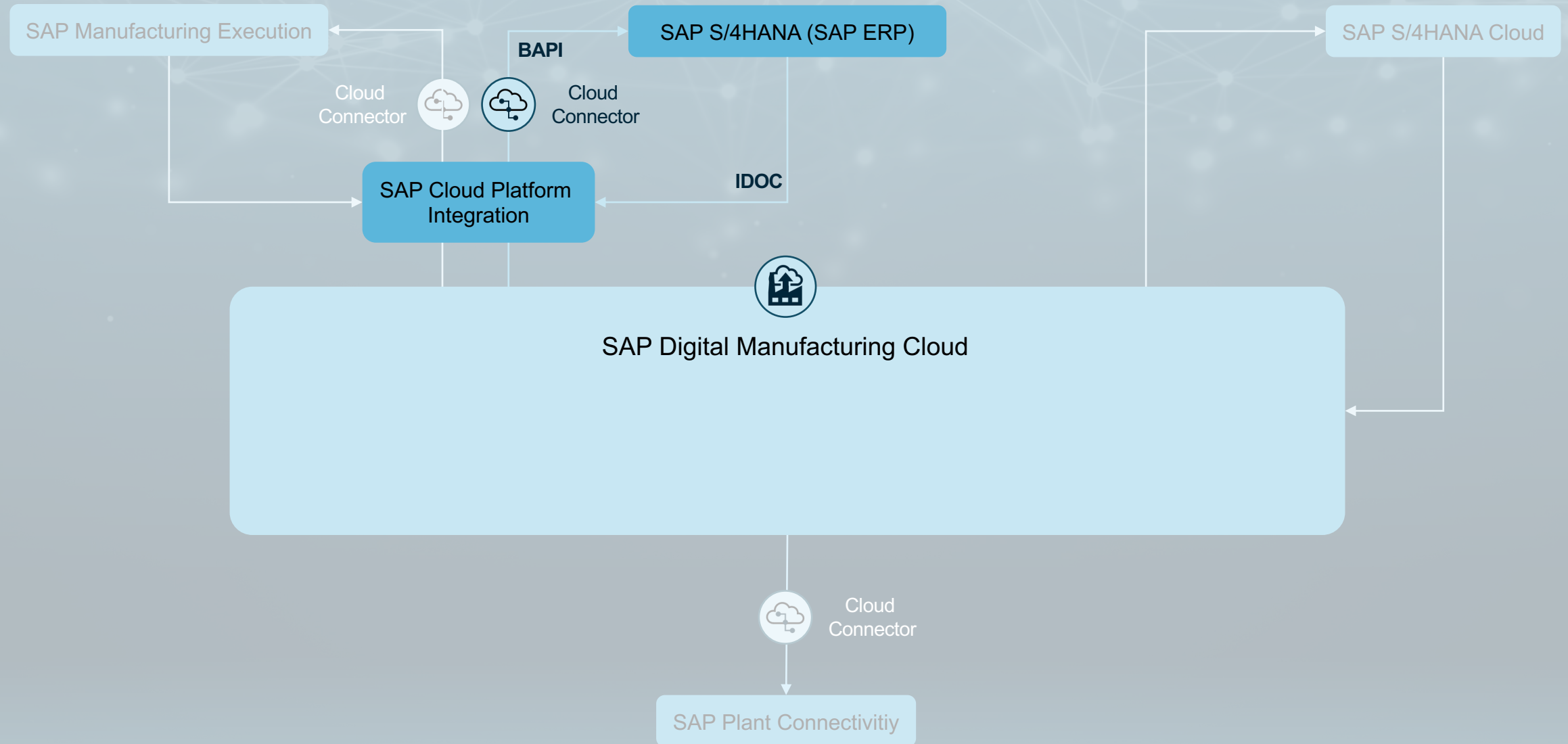


SAP Cloud Connector

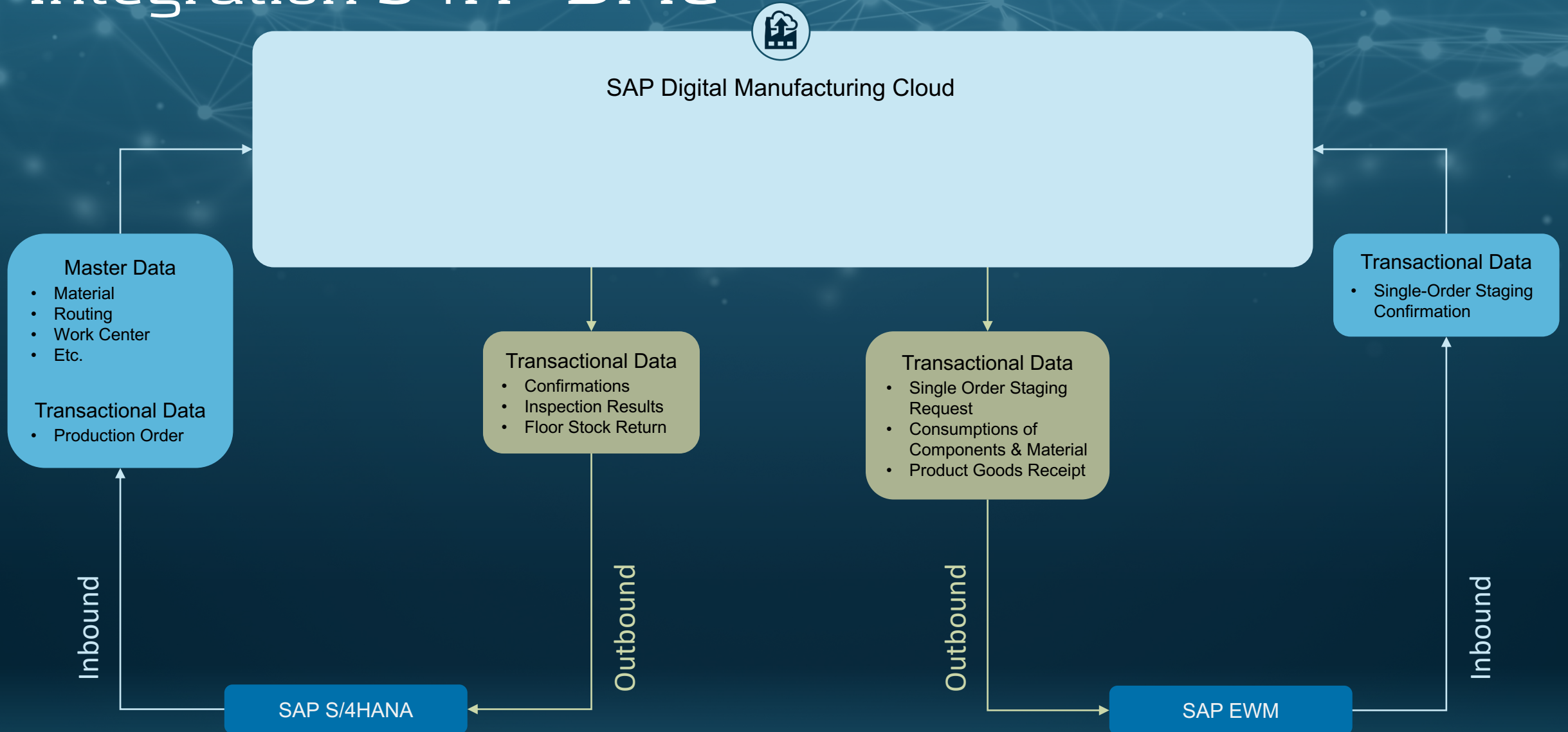


Integration S4H - DMC

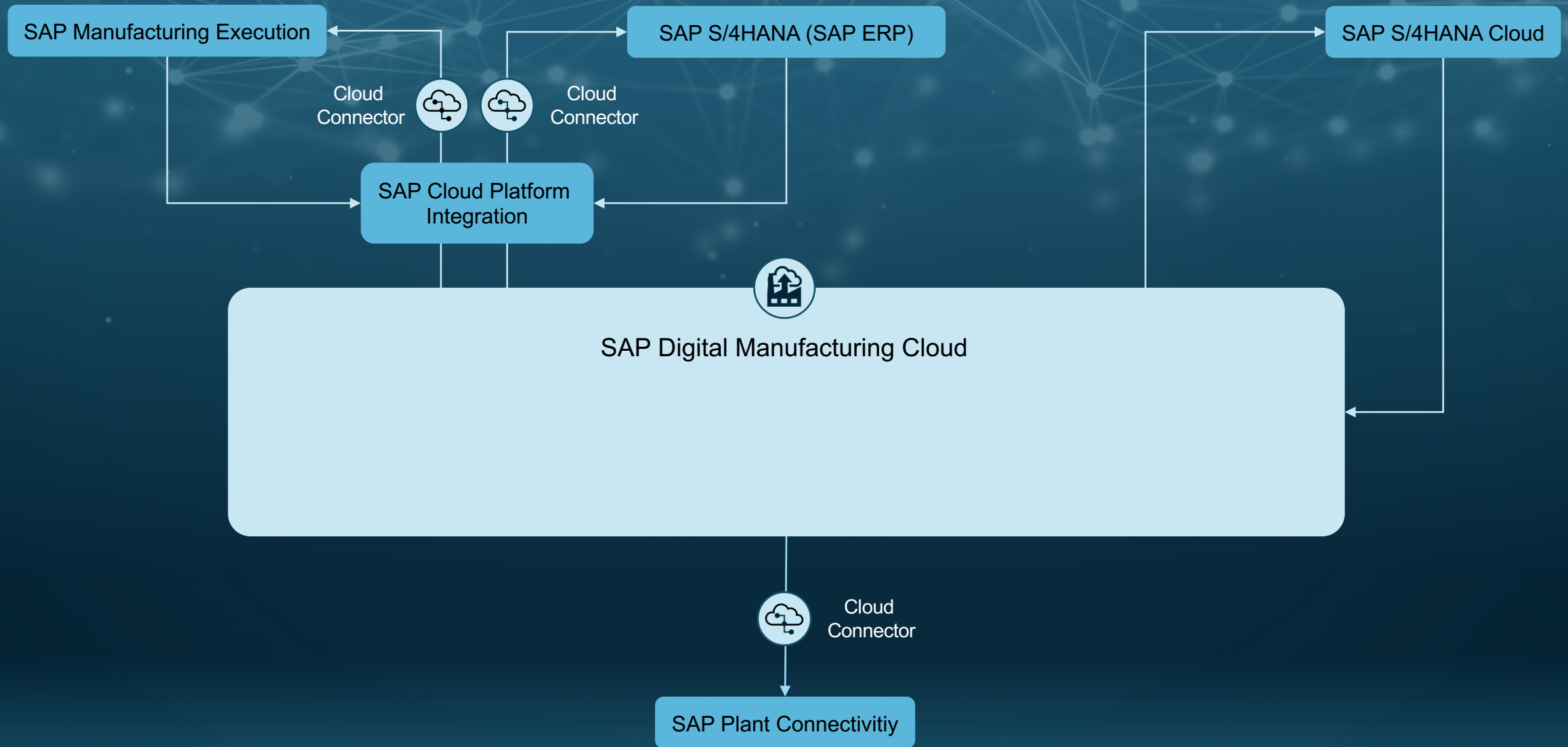
HTTP-Connection
Set-Up of DRF



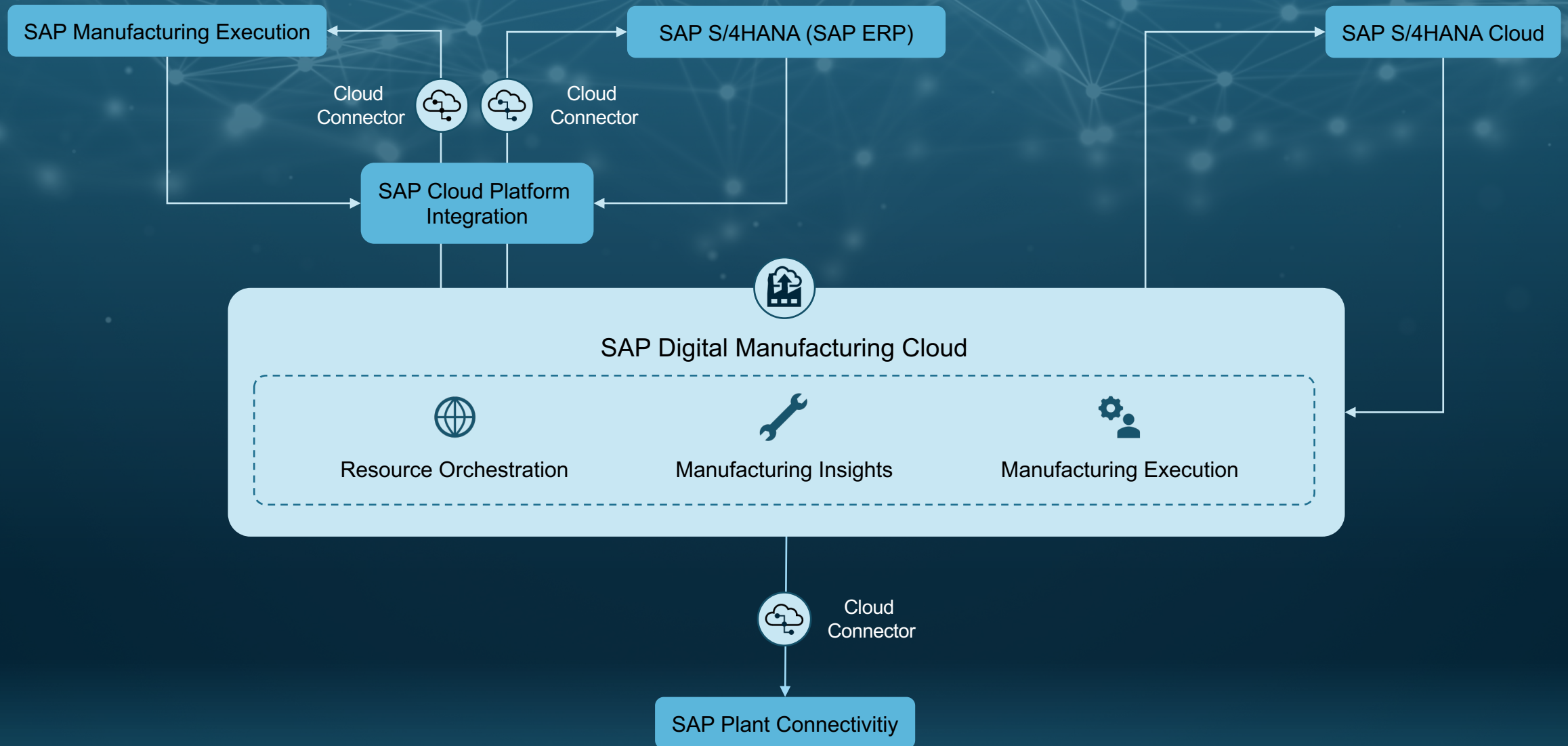
Integration S4H - DMC



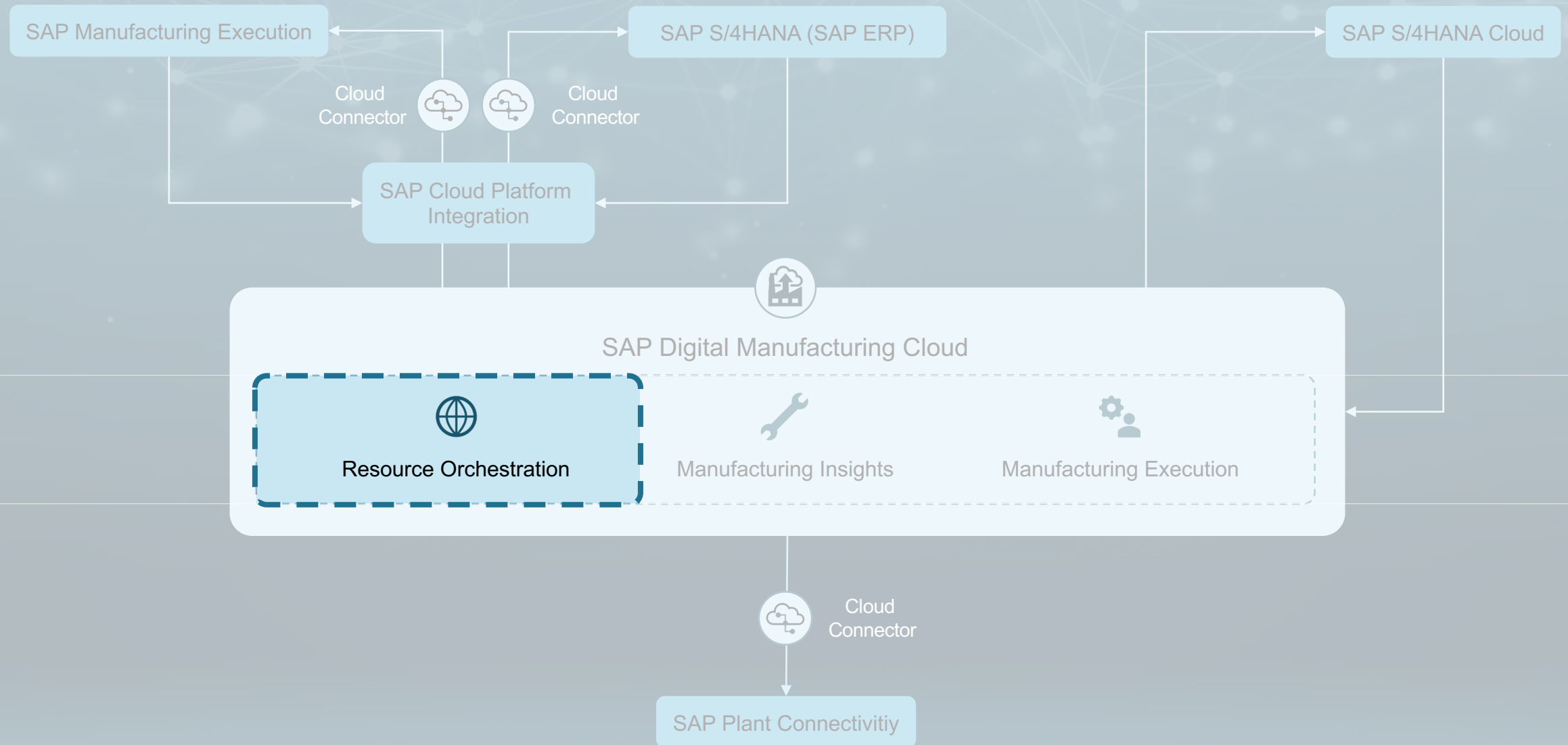
What is DMC?



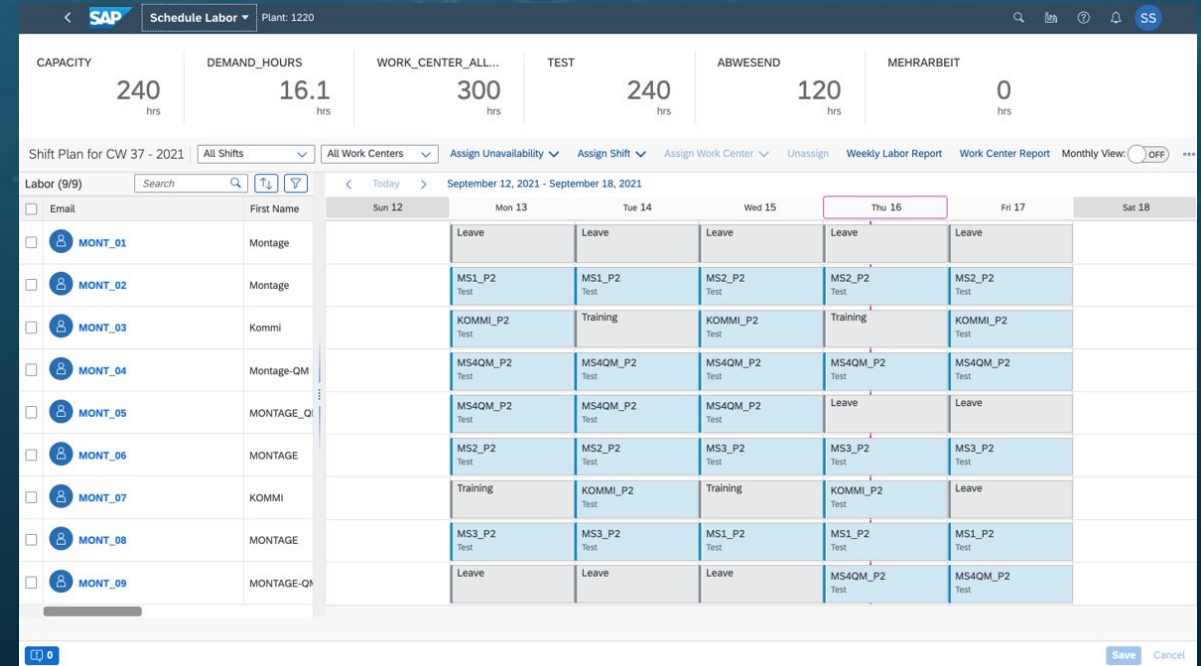
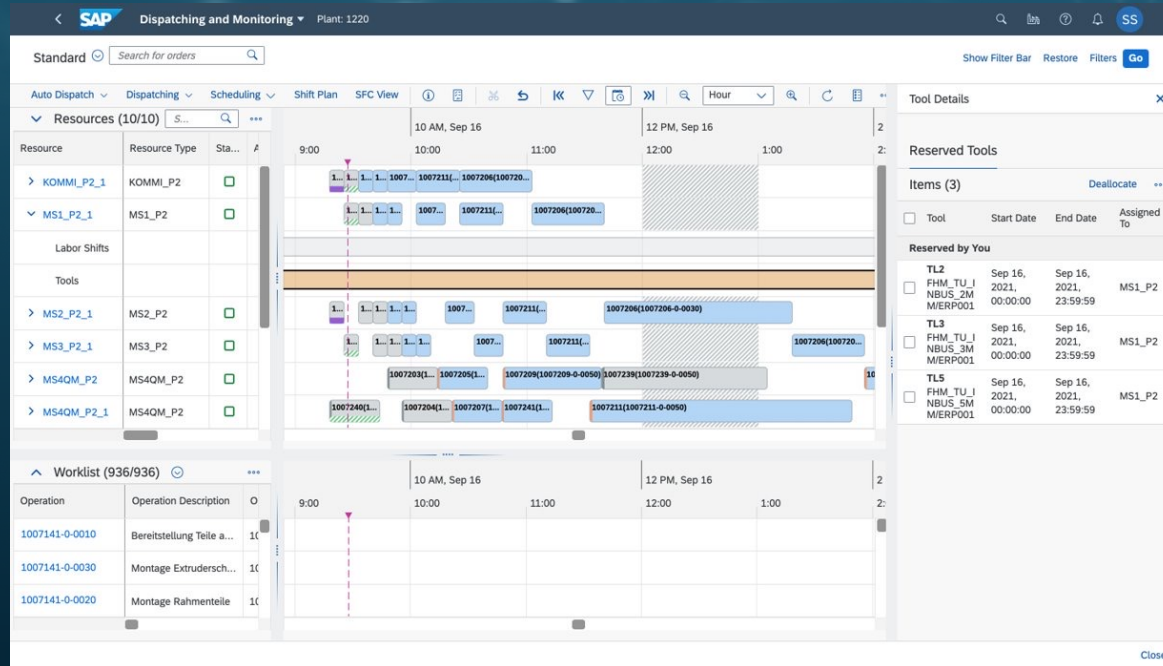
What is DMC?



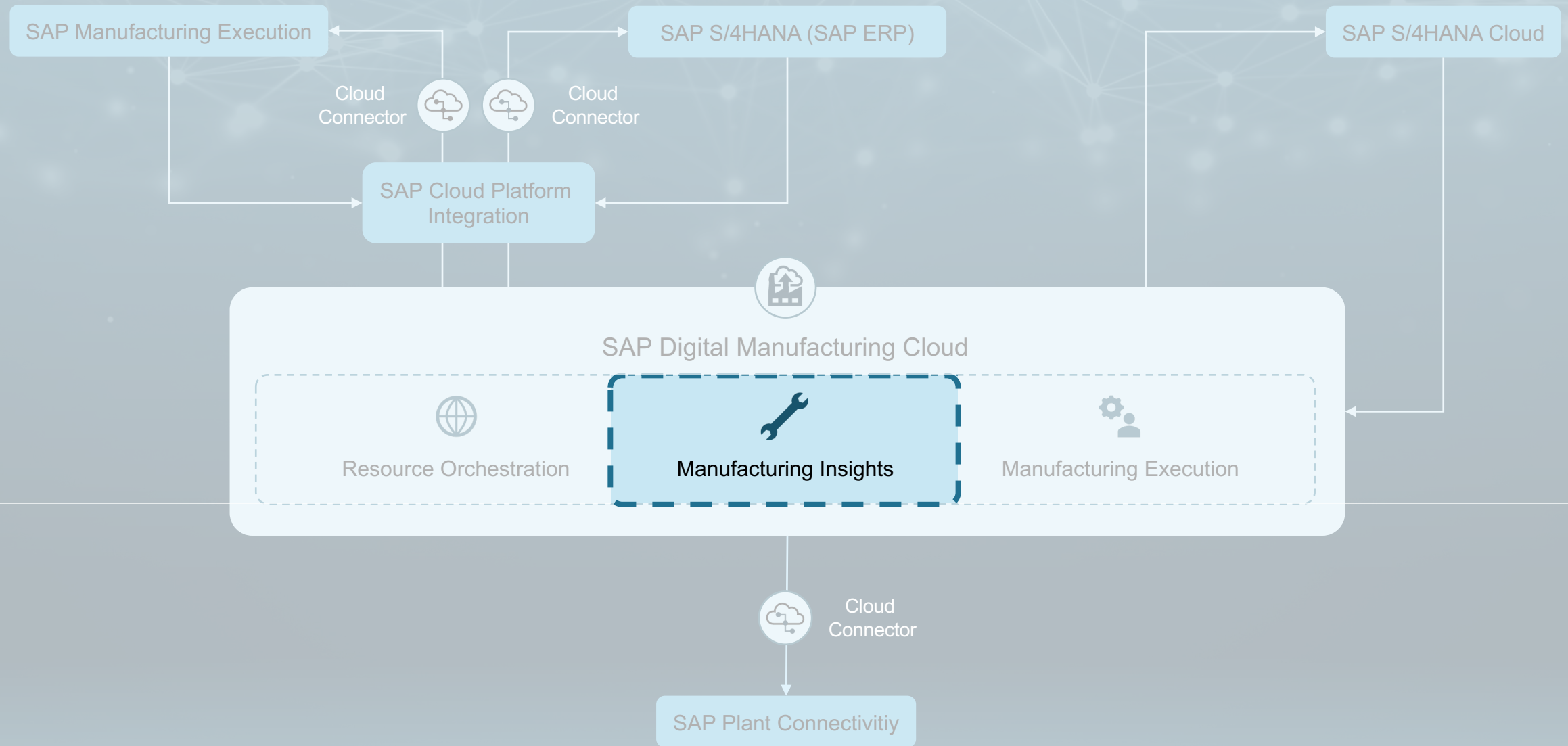
SAP Digital Manufacturing Cloud REO



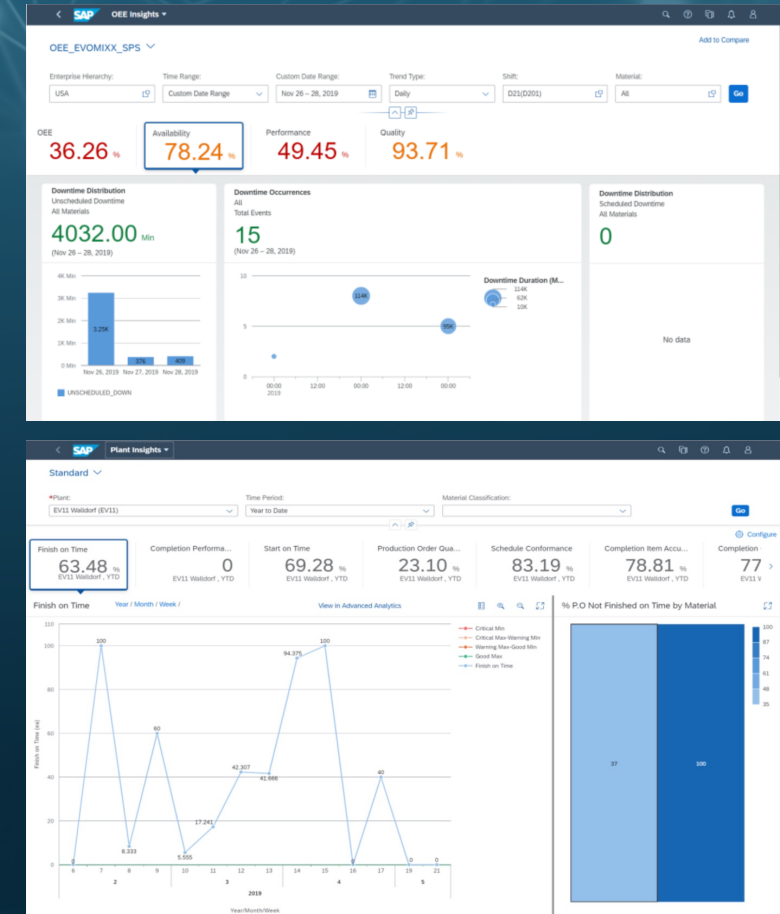
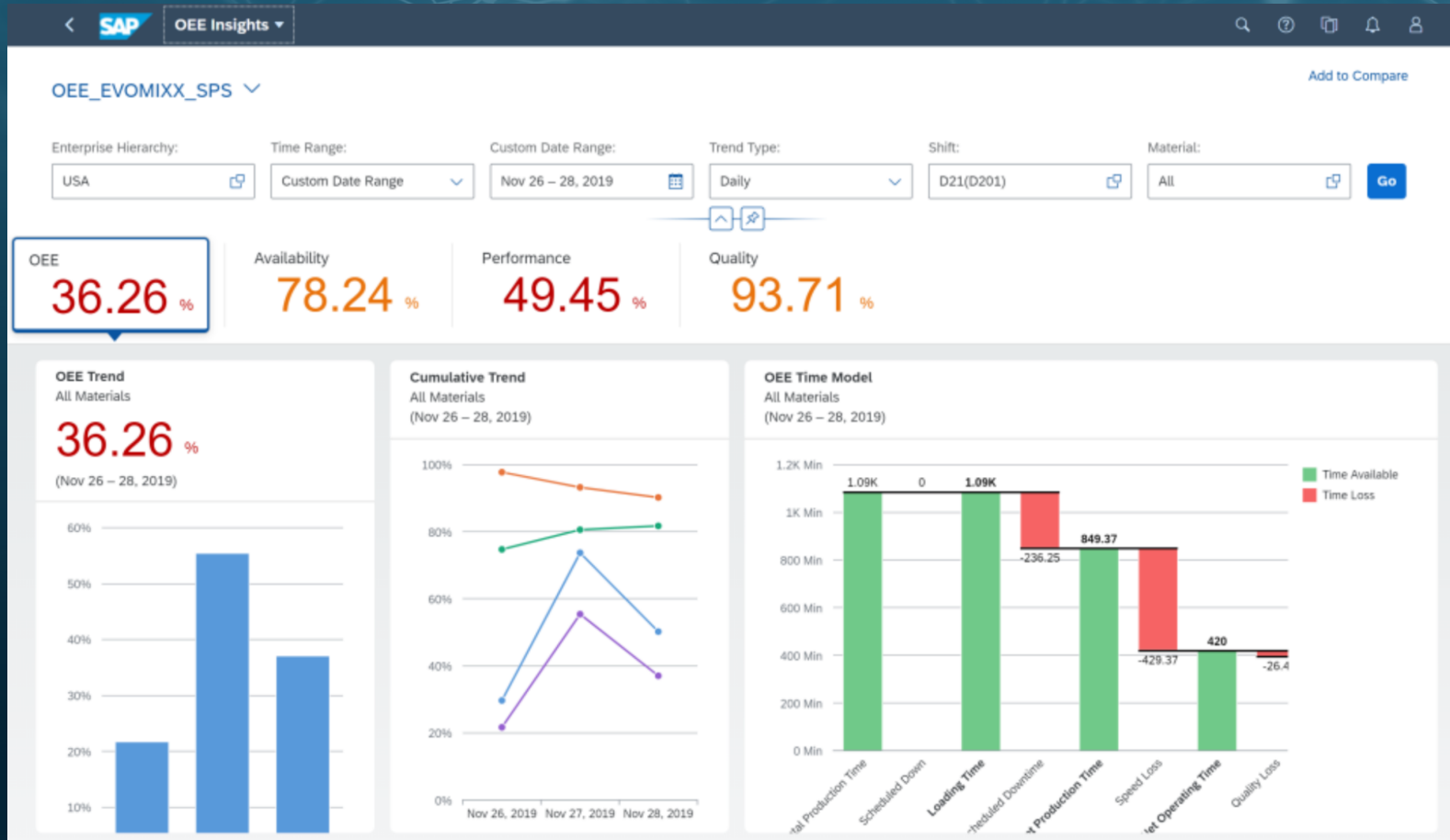
SAP Digital Manufacturing Cloud REO



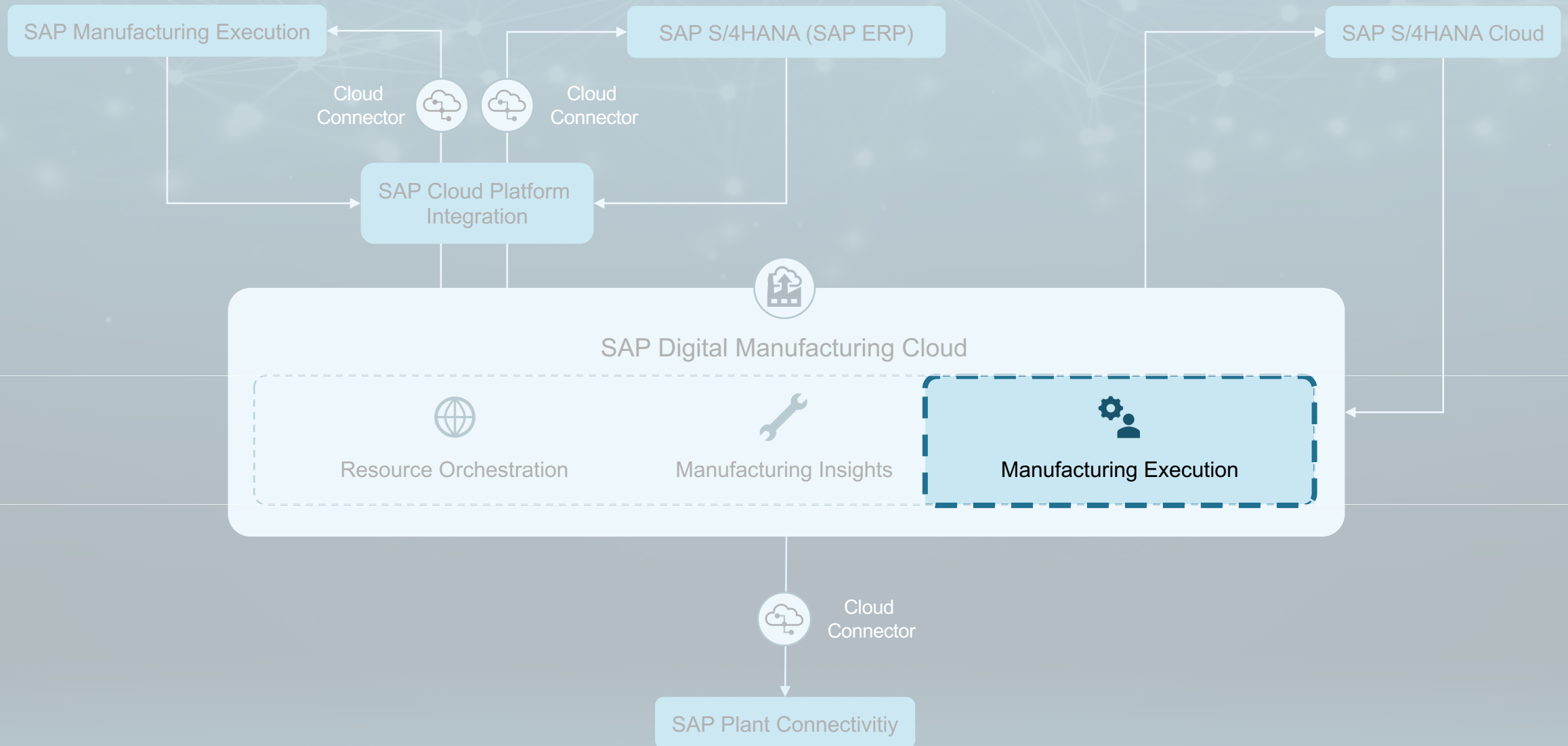
SAP Digital Manufacturing Cloud for Insights



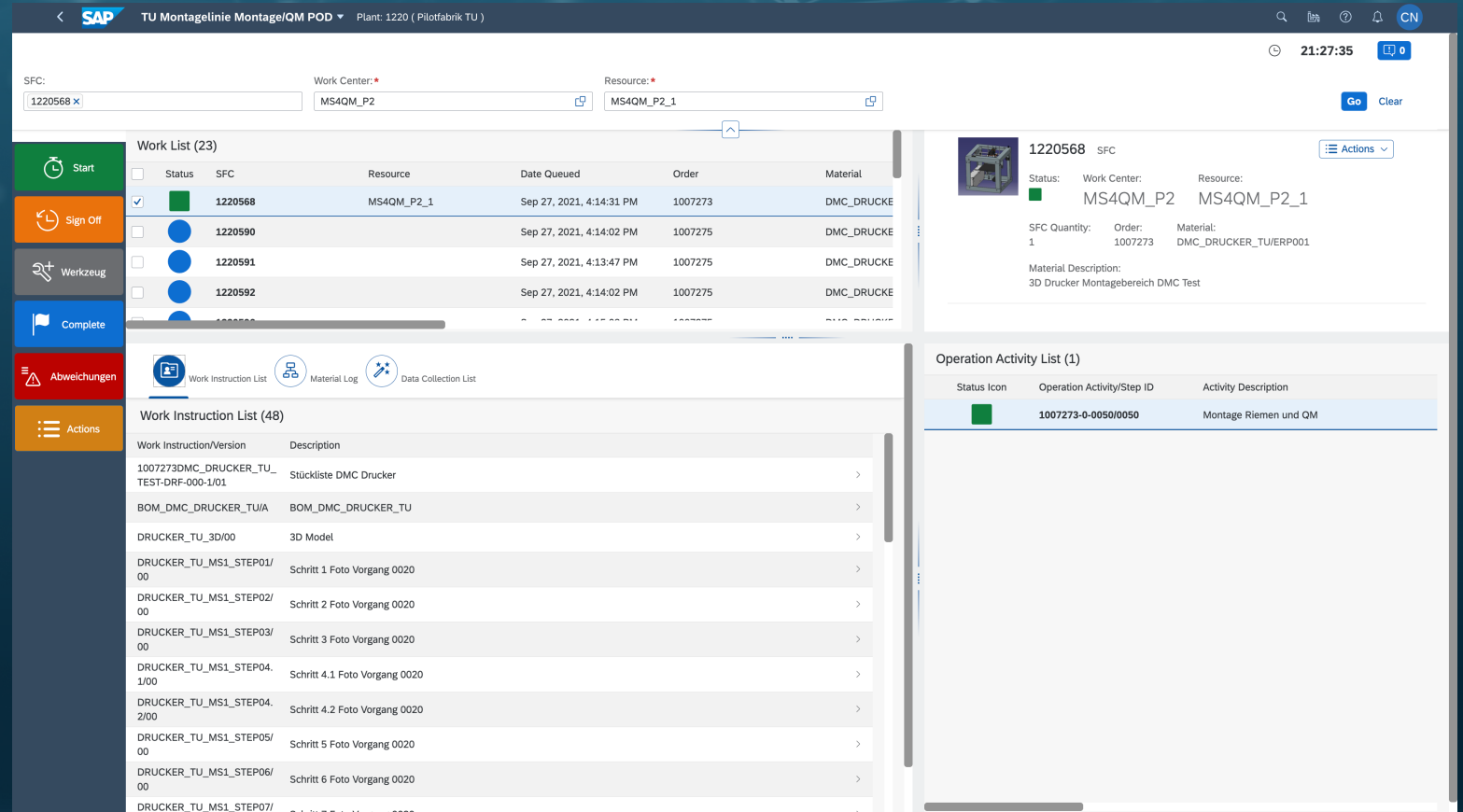
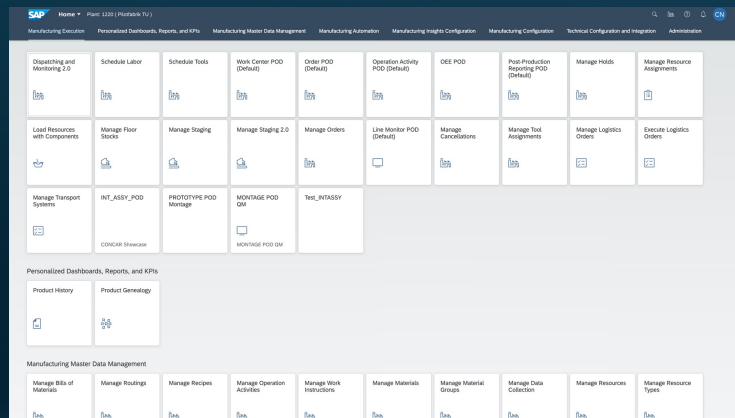
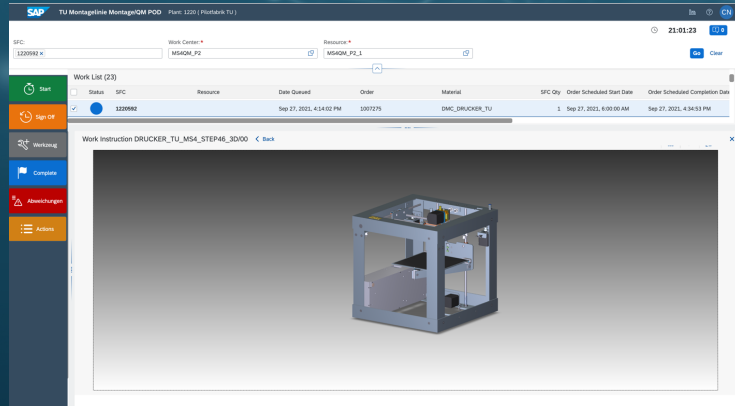
SAP Digital Manufacturing Cloud for Insights



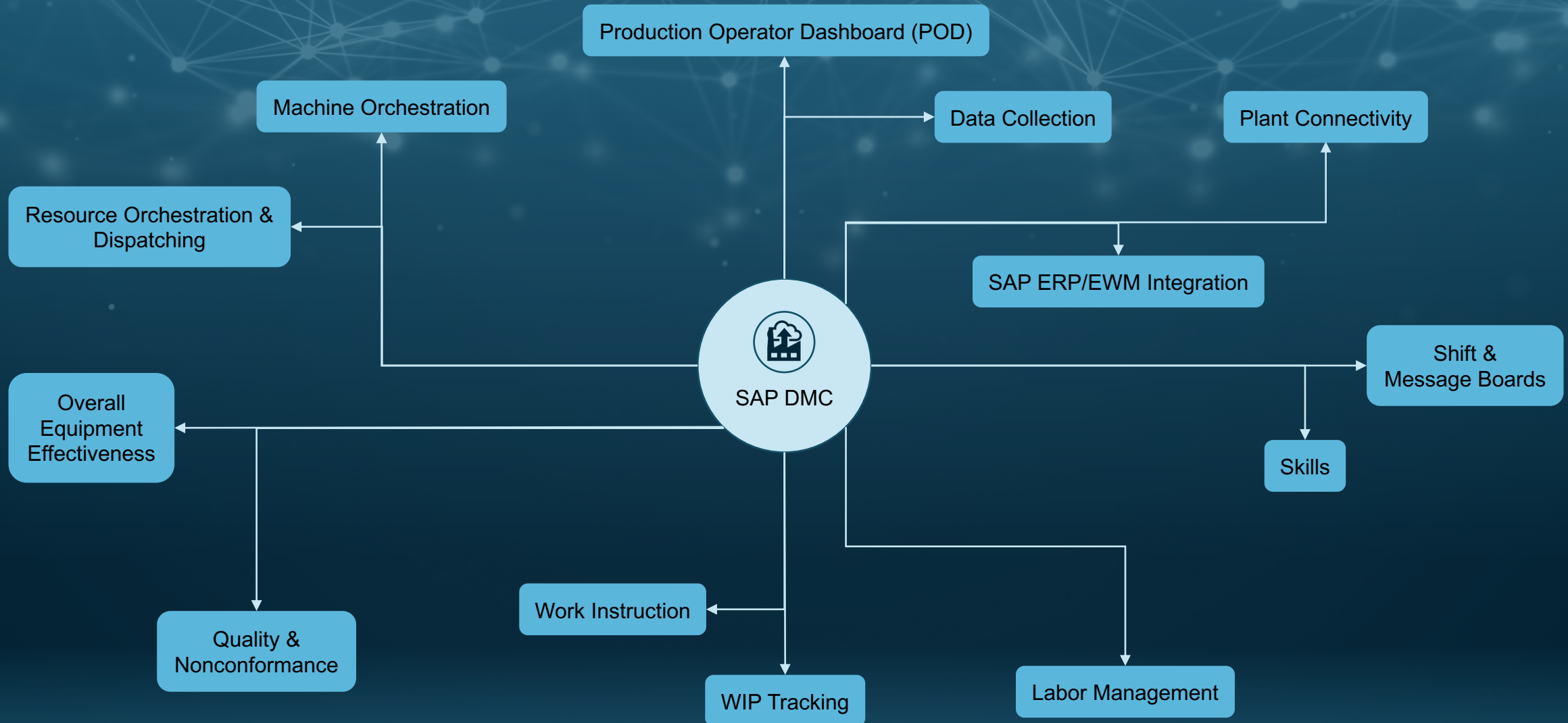
SAP Digital Manufacturing Cloud for Execution



SAP Digital Manufacturing Cloud for Execution



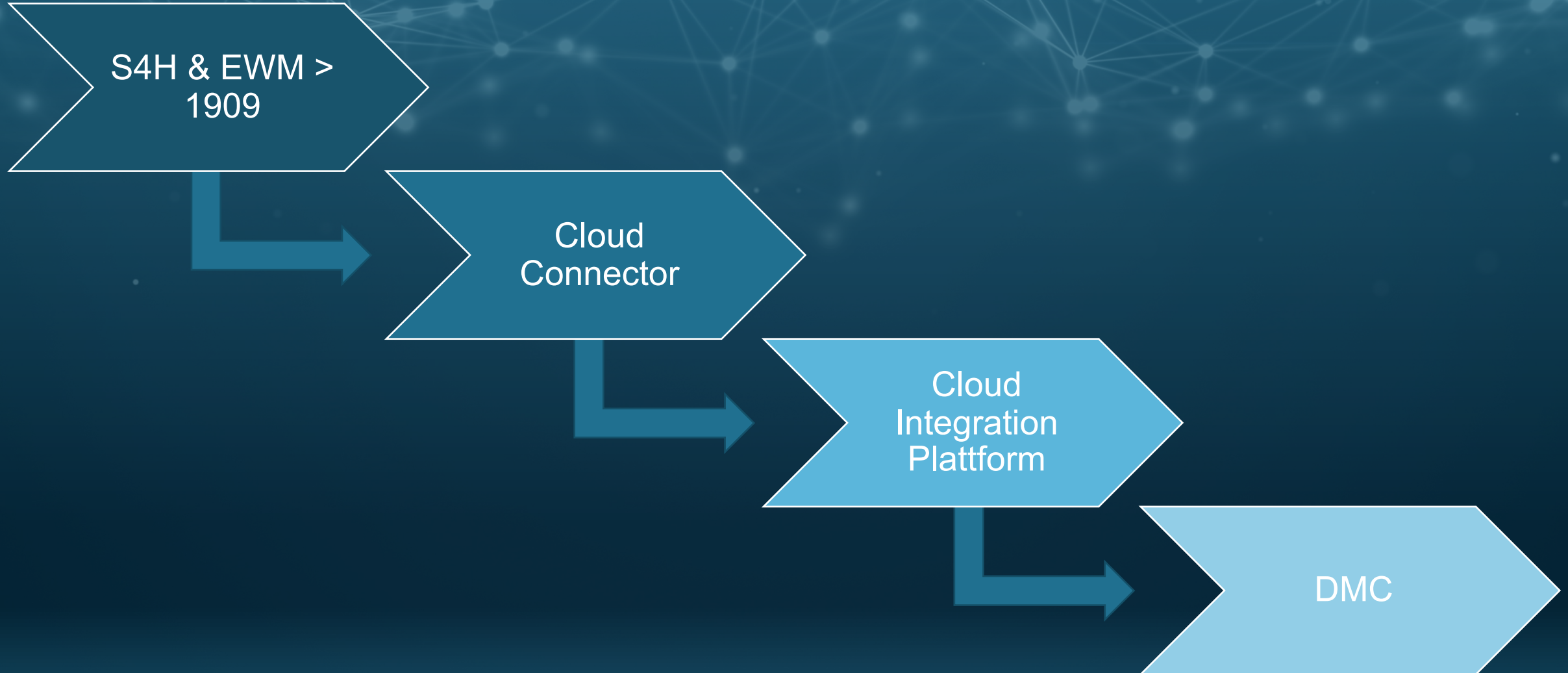
SAP Digital Manufacturing Cloud for Execution



What offers SAP DMC for integrated logistics?

Integration of SAP Digital Manufacturing Cloud with Extended Warehouse Management

SAP DMC - EWM: Integration



SAP DMC – EWM: Integration scenarios



SAP Digital Manufacturing Cloud

Staging Request



Manage Staging App



Staging upon Order Release



Staging via API

Material Consumption



Workcenter POD (Dis-)Assembly



Order POD Goods Issue



Order POD Goods Issue Cancellation

Goods Receipt



Workcenter POD Handling Unit



Order POD Goods Issue



Goods Issue & Cancellation via API

SAP DMC - EWM: Integration scenarios



SAP Digital Manufacturing Cloud

Staging Request



Manage Staging App



Staging upon Order Release



Staging via API

Material Consumption



Workcenter POD (Dis-)Assembly



Order POD Goods Issue



Order POD Goods Issue Cancellation

Goods Receipt



Workcenter POD Handling Unit



Order POD Goods Issue



Goods Issue & Cancellation via API

SAP DMC - EWM: Integration scenarios



SAP Digital Manufacturing Cloud

Staging Request



Manage Staging App



Staging upon Order Release



Staging via API

Material Consumption



Workcenter POD (Dis-)Assembly



Order POD Goods Issue



Order POD Goods Issue Cancellation

Goods Receipt



Workcenter POD Handling Unit



Order POD Goods Issue



Goods Issue & Cancellation via API

SAP DMC - EWM: Integration scenarios



SAP Digital Manufacturing Cloud

Staging Request



Manage Staging App



Staging upon Order Release



Staging via API

Material Consumption



Workcenter POD (Dis-)Assembly



Order POD Goods Issue



Order POD Goods Issue Cancellation

Goods Receipt



Workcenter POD Handling Unit



Order POD Goods Issue



Goods Issue & Cancellation via API

SAP Digital Manufacturing Cloud for Execution



Next Generation Intelligent
Assembly POD

conCAR

Next Generation Assembly Station - Hardware

CONCAR



Camera with USB-Connection

ALL-IN-ONE PC with Touchscreen



For more information

Clemens Neuwirth

IT Consultant

clemens.neuwirth@concircle.com

+43 676 406 52 83

Andras Sallay

Senior IT Consultant

andras.sallay@concircle.com

+421 940 949 411

Concircle Österreich GmbH

Wienerbergstraße 11

A-1100 Vienna

Austria

Tel: +43 1 2368747

Email: office@concircle.com

Website: www.concircle.com

