

# QPPD – master data management tool



## Key Facts

- SAP ERP Add-on, developed together with SAP, supports S/4 HANA on premise ERP
- Integrated into SAP ERP standard master data and processes
- Product modelling for demand specification and order dressing
- Rules management integration
- Processes supported by QPPD: offer, sales order, order dressing, costing, production orders, inspection instructions, certificates



## Functions

- Strong but flexible user cockpit (GUI)
- All typical data handling methods are available (create, change, display,...)
- Remote control enables using QPPD object in other applications
- Mapping of hierarchic structures & objects
- Versioning, Archiving
- Authorizations
- Data distribution: SAP- & Legacy Systems
- Object comparison



## Technicals

- SAP ECC or S/4 HANA

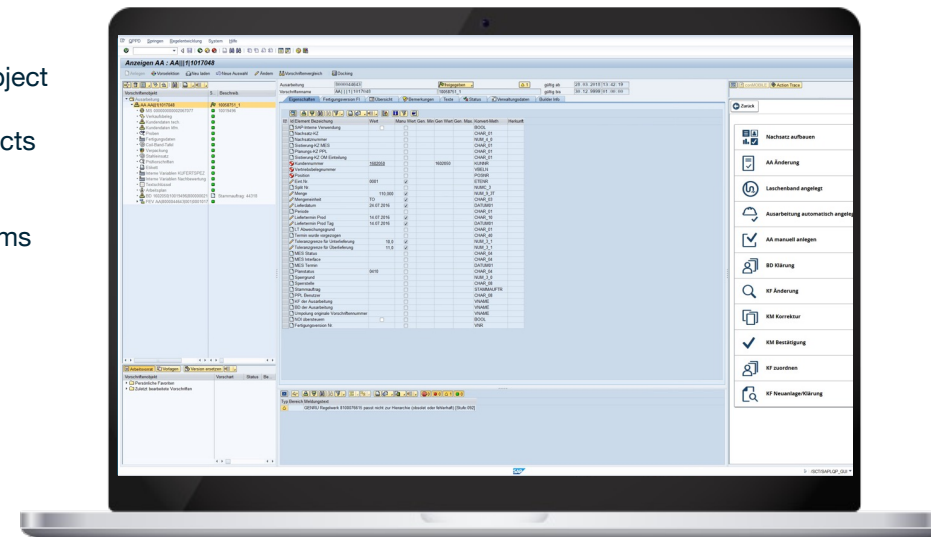
## Benefits

- Same look and feel for all objects
- High transparency by using cross references including SAP ECC objects
- High Performance of data generation
- Possibility to define own business rules
- Simple maintenance of additional master data (similar to SAP Classification System) directly in productive environment
- Enhancement of existing SAP master data (material master/ Customer...) with unlimited data
- Structured data with own hierarchy



## Highlights

- QPPD is a universal integrated SAP-Add-On to handle any kind of specification (standards/ internal specifications/external specifications) with
- Properties/ descriptive data
- Documents / Notes/ Pictures/ multiple texts
- Optional versioning & validity dates
- Inheritance and referencing
- Open for customer individual enhancements
- Using standard BRF+ for defining business rules



## Product owner

Amrit Khanna  
+41 76 455 3180  
amrit.khanna@concircle.com



voestalpine



DILLINGER

CONCIRCLE