

# conFIGURE - the universal configuration tool



## Key Facts

- conFIGURE is an add-on to the standard SAP variant configuration that implements rule maintenance as well as bill of material and routing determination using the SAP BRF+ Rules Engine
- This offers benefits and flexibility in the design and runtime of a variant configuration model
- The link between the standard SAP VC and SAP BRF+ thus enables BOM determination in both classic variant configuration (LOVC) and extended variant configuration (AVC)



## Functions

- Clear outline of configuration features
- Multi-level configuration
- Online visualization of the current BRF+ rules and regulations
- Current application log (BRF+ rule trace)
- Clear customizing
- Characteristic fast entry
- Clear dependencies (logic syntax)
- Care by specialist department possible
- Versioning at object level



## Technicals

- SAP ECC/APO : MM, SD, PP, PM, QM, APO
- PPDS with VC and BRF+
- S/4 HANA: SD with AVC und BRF+

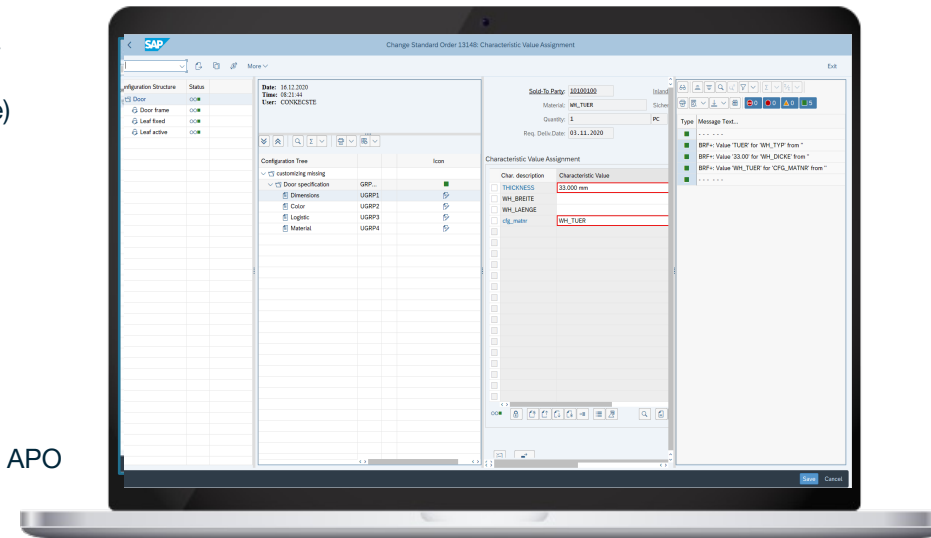
## Benefits

- Enhancement of SAP standard functionality
- Characteristic fast entry
- Integration with cost accounting and logistics
- Quick and easy solution implementation
- Flexible and easy to understand the variant configuration
- Direct access to SAP data without using reference characteristics
- Access to any element of a multilevel configuration very easy (not only \$ROOT, \$PARENT possible)



## Highlights

- Use of SAP ERP Variant Configuration (LOVC/AVC)
- Integration of BOM and routing determination integrated into AVC configuration dialogs
- Simple connection to the system
- conFIGURE or parts of conFIGURE are successfully in use at many of our clients in various industries, and through implemented and ongoing projects it can be continuously developed and used across industries



## Product owner

Sebastian Schoppe  
+43 6769056490  
sebastian.schoppe@concircle.com



voestalpine

sappi

EGGER

SENOPLAST  
a member of Kaysch group

BIBRAUN  
SHARING EXPERTISE

CONCIRCLE